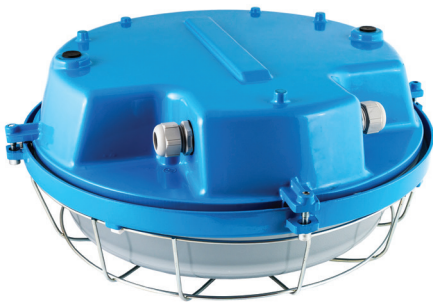


# TURTLE LED

Light fitting for the illumination of indoor and outdoor industrial spaces.



## TECHNICAL DESCRIPTION

The light fitting body and flange are AlSi alloy castings finished with powder paint. There are two cable outlets on the sides of the light fitting. There is a LED module built inside the light fitting and it is comprised of a board fitted with LEDs and a power supply. The light fitting is designed as a through light fitting. When the light fitting is used as a terminal light fitting, the free cable outlet is blinded with a plug. The max. cross-section of the connecting conductors is 2,5 mm<sup>2</sup>. The light fitting is produced with plastic cable gland as standard, metal gland is available on request.

## INSTALLATION

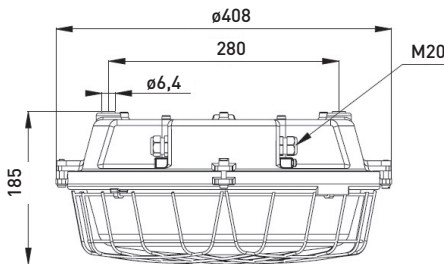
On the ceiling, wall or another solid substrate (structure) ensuring firm connection.

## VERSIONS

The light fittings are provided with a self-resetting thermal fuse and a surge guard up to 3kV.

## LIFETIME

50.000 hours, L80B20



CE	LED	198 - 264V AC 176 - 276V DC
IP66	F	Ta -30°C ÷ +40°C
Carton (mm/pcs) 400 x 400 x 190 / 1		

Type	Power input [W] / Luminous flux [lm]	Luminous efficiency [lm/W]	Angle of beam [°]	Colour temperature [K]	CRI	Weight [kg]
591 35 01	50 / 6473	130	120	4000, 5000, 5700, 6500	>80	8
591 35 02	30 / 4039	135	120	4000, 5000, 5700, 6500	>80	8
591 35 03	20 / 2709	135	120	4000, 5000, 5700, 6500	>80	8

## MAXIMUM CIRCUIT BREAKER LOAD AND NUMBER OF LUMINAIRES CONNECTED IN SERIES

Circuit breaker	C10	C13	C16	C20	B10	B13	B16	B20
Amount of luminaires max	20	26	33	43	12	16	20	26
Conductor cross-section	1,5	1,5	2,5	4	1,5	1,5	2,5	4

Starting current I <sub>max</sub>	time
24.88A	236us

\* Actual values may vary due to the types of circuit breakers used and the installation environment.

## TO ORDER



Transparent glass cover  
232.5070



Protective basket  
1-99.8534/1



Cable gland plastic  
M20x1,5



Cable gland metal  
M20x1,5



Blinding plug  
M20x1,5

# LUMINAIRES CONFIGURATOR

Applies to a group of luminaires **BILUX LED, TRILUX LED, TUB LED, TUB LED PRO, TURTLE LED, TURTLE LED PRO**

## 591 34 01PRO 1 - 1D 2 - 30 3 - 11 4 - M20 5 - 4K 6

### 1 Type

1
1D
2

30
40
50

10
11

M20
M25
P20
P25
Q20
Q25

4K
5K
5K7
6K
6K5

### 2 Driver

1 - TRIDONIC  
 1D - TRIDONIC with DALI II  
 2 - TCI

### 3 Wiring

30 - single 3-pole terminal → 

3	0
---	---

  
 40 - single 4-pole terminal → 

4	0
---	---

  
 50 - single 5-pole terminal → 

5	0
---	---

### 4 Cable inlets - quantity

1 - one cable inlet on the side of the housing → 

1	0
---	---

  
 11 - one cable inlet on both sides of the housing → 

1	1
---	---

 ←

### 5 Type of cable inlets

M20 - METAL, 6 mm - 13 mm  
 M25 - METAL, 9 mm - 17 mm  
 P20 - PLASTIC, 6 mm - 13 mm  
 P25 - PLASTIC, 9 mm - 17 mm  
 Q20 - PLASTIC 6 mm - 13 mm QUICK CONNECTOR - 3 POLE  
 Q25 - PLASTIC 9 mm - 17 mm QUICK CONNECTOR - 5 POLE

### 6 Colour temperature

4K - 4000 K  
 5K - 5000 K  
 5K7 - 5700 K  
 6K - 6000 K  
 6K5 - 6500 K