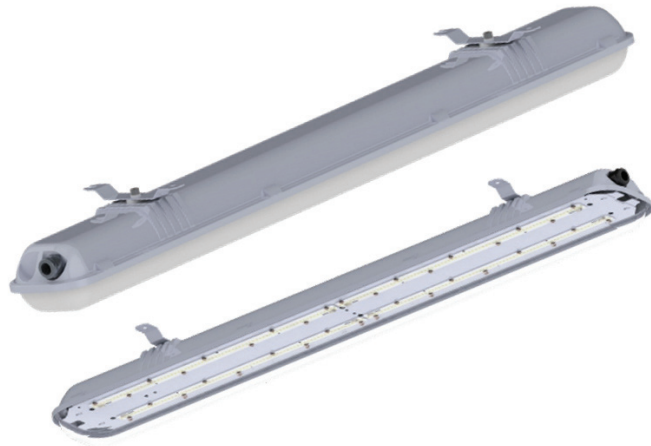


# PRACHO PLA LED

Light fitting for the illumination of indoor and outdoor industrial spaces.



## TECHNICAL DESCRIPTION

The light fitting body is made of glass-fibre-reinforced polyester (GRP). The diffuser is supplied as standard in UV stabilised polycarbonate (PC). The caps are made of stainless steel. The mounting brackets are made of powder-coated sheet steel. The luminaire is equipped with a reflector made of sheet steel. The luminaire is manufactured as a 3-phase through luminaire. When the luminaire is used as an end luminaire, the free cable gland is blinded with an Ex-plug. The maximum cross-section of the connecting wires is 2,5 mm<sup>2</sup>.

## INSTALLATION

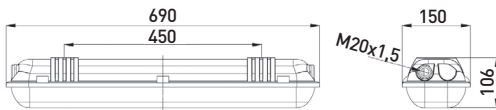
On ceiling or wall using two brackets.

## VERSIONS

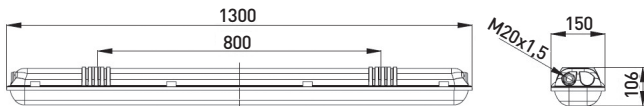
Light fittings are supplied with M20x1.5 cable glands as standard. The luminaire can be manufactured with an emergency unit, designation 591 14 xx EM.

## LIFETIME

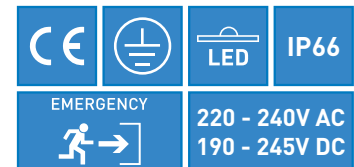
120.000 hours, L80B20



591 14 04, 591 14 05



591 14 01, 591 14 02, 591 14 03



Type	Power input [W]	Luminous flux [lm]	Luminous efficiency [lm/W]	Colour temperature [K]	CRI	Ambient temperature	Weight [kg]
591 14 01	70	10 554	152	4000, 5000, 5700, 6500	>80	-40°C ÷ +55°C	5,5
591 14 02	55	9 171	168	4000, 5000, 5700, 6500	>80	-40°C ÷ +55°C	5,5
591 14 03	40	6 692	167	4000, 5000, 5700, 6500	>80	-40°C ÷ +55°C	5,5
591 14 04	25	4 061	163	4000, 5000, 5700, 6500	>80	-40°C ÷ +60°C	3,5
591 14 05	15	2 482	167	4000, 5000, 5700, 6500	>80	-40°C ÷ +60°C	3,5

## PARAMETERS OF THE TYPE WITH EMERGENCY UNIT

Type	Power input [W]	Operating time [h]	Ambient temperature
591 14 01, 02, 03	4,5	3	+5°C ÷ +55°C
591 14 04, 05	4,5	3	+5°C ÷ +60°C

\*PM – by adding the letter „PM” the luminaire will be equipped with a polymethylmethacrylate diffuser (e.g. 591 14 07 PM).

\*EM – by adding the letters „EM” the light fitting will be equipped with an emergency unit with autonomy up to 3 hours (e.g. 591 14 05EM).



**MAXIMUM CIRCUIT BREAKER LOAD AND NUMBER OF LUMINAIRES CONNECTED IN SERIES OF TYPE 591 14 01, 591 14 02, 591 14 03**

Circuit breaker	C10	C13	C16	C20	B10	B13	B16	B20
Amount of luminaires max	33	41	53	66	20	25	32	40
Conductor cross-section	1,5	1,5	2,5	4	1,5	1,5	2,5	4

Starting current I <sub>max</sub>	time
5A	1,000us

**MAXIMUM CIRCUIT BREAKER LOAD AND NUMBER OF LUMINAIRES CONNECTED IN SERIES OF TYPE 591 14 04 A 591 14 05**

Circuit breaker	C10	C13	C16	C20	B10	B13	B16	B20
Amount of luminaires max	16	21	26	35	10	13	16	21
Conductor cross-section	1,5	1,5	2,5	2,5	1,5	1,5	2,5	2,5

Starting current I <sub>max</sub>	time
32A	240us

\* Actual values may vary due to the types of circuit breakers used and the installation environment.

**TO ORDER**



PC diffuser



Stainless steel cap  
30543



Blinding plug  
M20x1,5

Applies to a group of luminaires **PRACHO LED, PRACHO PLA LED**

# 591 14 01 1 - 1D 2 - 30 3 - 11 4 - M20 5 - 4K 6 - 00 7

## 1 Type

1
1D
2

## 2 Driver

- 1 - TRIDONIC
- 1D - TRIDONIC with DALI II
- 2 - TCI

30
33
40
44
50
55
60
66
70
77

10
11

M20
M25
P20
P25
Q20
Q25

4K
5K
5K7
6K
6K5

00
01
02
03

## 3 Wiring

- 30 - single 3-pole terminal → 

3	.
---	---
- 33 - double 3-pole terminal → 

3	3
---	---

 ←
- 40 - single 4-pole terminal → 

4	.
---	---
- 44 - double 4-pole terminal → 

4	4
---	---

 ←
- 50 - single 5-pole terminal → 

5	.
---	---
- 55 - double 5-pole terminal → 

5	5
---	---

 ←
- 60 - single 6-pole terminal → 

6	.
---	---
- 66 - double 6-pole terminal → 

6	6
---	---

 ←
- 70 - single 7-pole terminal → 

7	.
---	---
- 77 - double 7-pole terminal → 

7	7
---	---

 ←

## 4 Cable inlets - quantity

- 10 - one cable inlet on the side of the housing → 

1	0
---	---
- 11 - one cable inlet on both sides of the housing → 

2	0
---	---
- 20 - two cable inlets on the side of the housing → 

2	1
---	---

 ←
- 21 - two cable inlets on the on one side of the housing and one on the another → 

2	1
---	---

 ←
- 22 - two cable inlets on both sides of the housing → 

2	2
---	---

 ←

## 5 Type of cable inlets

- M20 - METAL, 6 mm - 13 mm
- M25 - METAL, 9 mm - 17 mm
- P20 - PLASTIC, 6 mm - 13 mm
- P25 - PLASTIC, 9 mm - 17 mm
- Q20 - PLASTIC 6 mm - 13 mm QUICK CONNECTOR- 3 POLE
- Q25 - PLASTIC 9 mm - 17 mm QUICK CONNECTOR -5 POLE

## 6 Colour temperature

- 4K - 4000 K
- 5K - 5000 K
- 5K7 - 5700 K
- 6K - 6000 K
- 6K5 - 6500 K

## 7 Optics

- 00 - WITHOUT OPTICS, 120 deg DIFFUSION CURVE
- 01 - SYMMETRICAL NARROW 25 deg
- 02 - SYMMETRICAL WIDE 120 deg
- 03 - ASYMMETRICAL