

JUNIOR LED

Light fitting for the illumination of heavy indoor and outdoor industrial spaces with a high level of mechanical stress.



TECHNICAL DESCRIPTION

The light fitting body and flange are AlSi alloy castings finished with powder paint. The optical cover is made of tempered glass. There are two cable outlets on the light fitting sides. There is a LED module built inside the light fitting and it is comprised of a board fitted with LEDs and a power supply. The light fitting is designed as a through light fitting, for three-phase connection (five-core cable). When the light fitting is used as a terminal light fitting, the free cable outlet is blinded with a plug. The max. cross-section of the connecting conductors is 4 mm². The light fitting is produced with plastic cable gland as standard, metal gland is available on request.

INSTALLATION

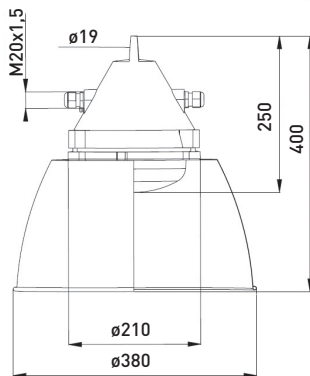
With a suspension eye $\varnothing 20$ mm, ceiling holder 4-99.7995, flexible suspension 2-99.5550

VERSIONS

Light fittings are provided with a self-resetting thermal fuse and surge guard up to 3kV.

LIFETIME

50.000 hours, L80B20



CE	LED	198 - 264V AC 176 - 280V DC
IP66	50 Hz 60 Hz	Ta -30°C ÷ +40°C
Carton (mm/pcs) 240 x 240 x 260 / 1		

Type	Power input [W] / Luminous flux [lm]	Luminous efficiency [lm/W]	Angle of beam [°]	Colour temperature [K]	CRI	Weight [kg]
591 15 01 (K)	30 / 3880	129	120	4000, 5000, 5700, 6500	>80	6
591 15 02 (K)	20 / 2600	130	120	4000, 5000, 5700, 6500	>80	6

*By adding letter „K” behind type designation, light fittings will be provided with protective steel baskets (591 15 01K).

MAXIMUM CIRCUIT BREAKER LOAD AND NUMBER OF LUMINAIRES CONNECTED IN SERIES

Circuit breaker	B16	Starting current I _{max}	time
Amount of luminaires max	50	5A	50us
Conductor cross-section	2,5		

* Actual values may vary due to the types of circuit breakers used and the installation environment.

TO ORDER



Shade
254.5021/01



Holder ofr mounting
on the ceiling
4-99.7995



Flexible suspension
2-99.5550