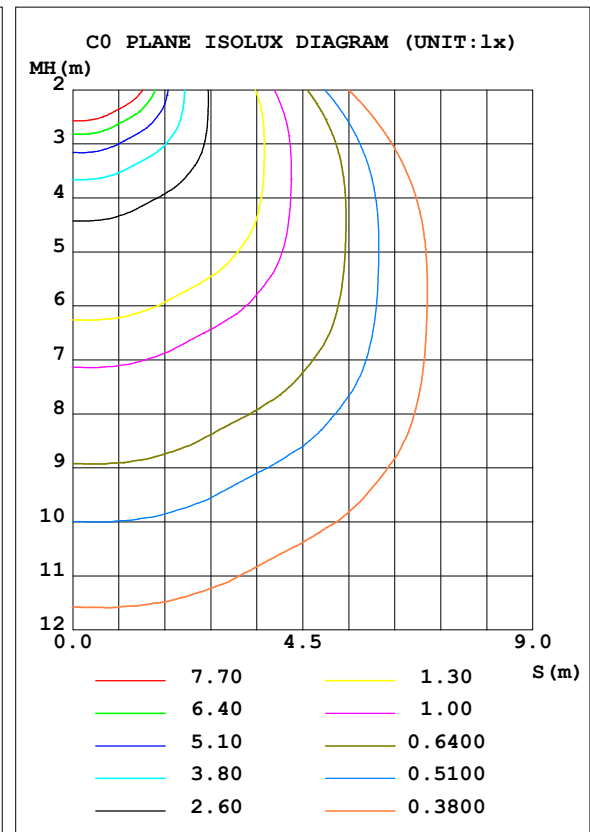
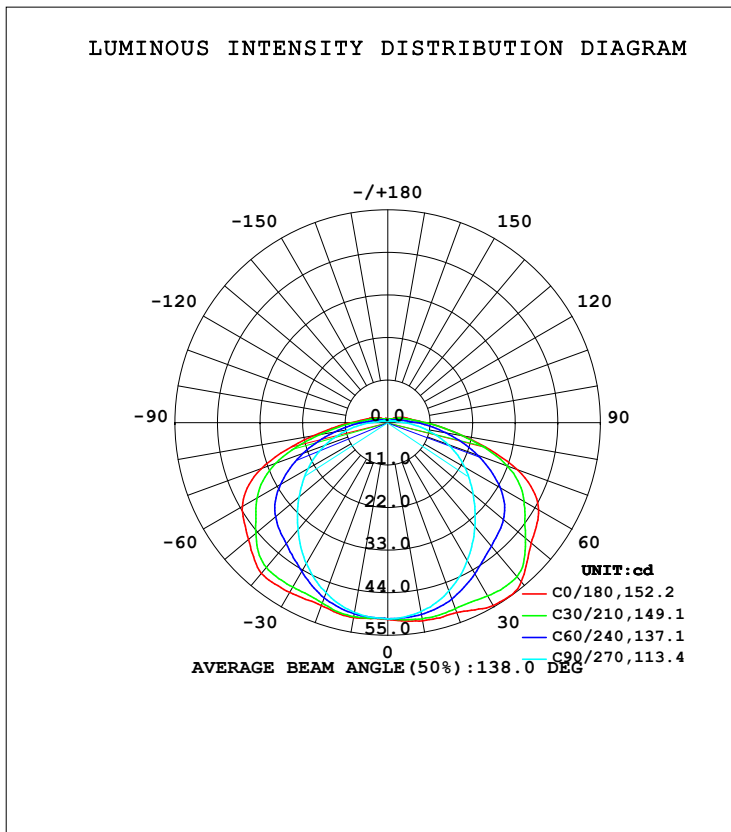


LUMINAIRE PHOTOMETRIC TEST REPORT

NAME: MULTISAFE LED - 591 32 02 nEM V2	TYPE:	WEIGHT:
SPEC.:	DIM.: 408x208x155mm	SERIAL No.:
MFR.: Elektrosvit Svatoborice, a.s.	SUR.:	Shielding Angle:

DATA OF LAMP		PHOTOMETRIC DATA			
MODEL		Imax (cd)	54.90	S/MH (C0/180)	1.54
NOMINAL POWER (W)	7.28427	LOR (%)	100.0	S/MH (C90/270)	1.24
RATED VOLTAGE (V)	230.09	TOTAL FLUX (lm)	221.13	η UP, DN (C0-180)	3.5, 46.4
NOMINAL FLUX (lm)	221.127	CIE CLASS	DIRECT	η UP, DN (C180-360)	3.5, 46.6
LAMPS INSIDE	1	η up (%)	7.0	CIBSE SHR NOM	1.50
TEST VOLTAGE (V)	230.09	η down (%)	93.0	CIBSE SHR MAX	1.55



C Range: 0 - 360DEG
 C Interval: 15.0DEG
 Test Speed: HIGH
 Temperature: 22DEG
 Operators: Go
 Test Date: 15 September 2020

γ Range: 0 - 180DEG
 γ Interval: 1.0DEG
 Test System: EVERFINE GO-2000A_V1 SYSTEM V2.0.295
 Humidity: 88%
 Test Distance: 7.710m [K=1.0000]
 Remarks:

ZONAL FLUX DIAGRAM

ZONAL FLUX DIAGRAM:

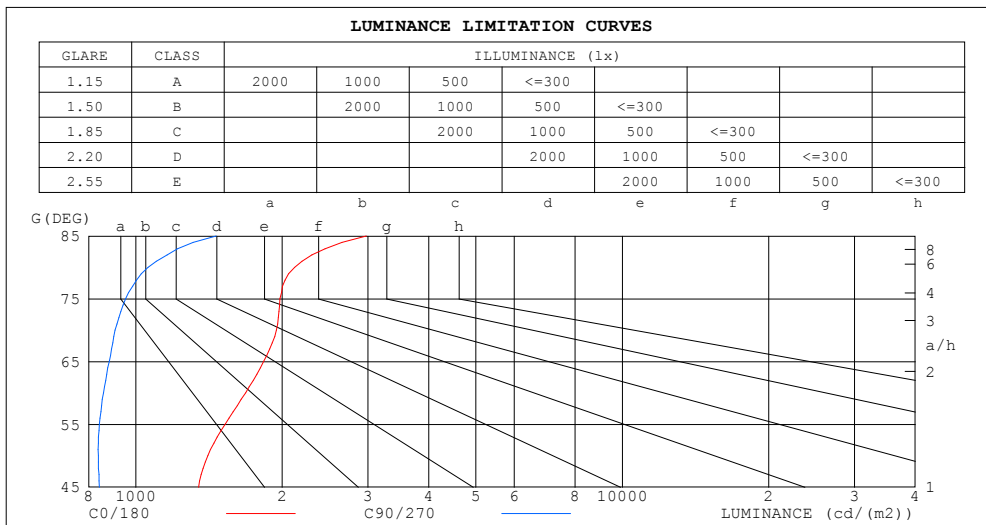
γ	C0	C45	C90	C135	C180	C225	C270	C315	γ	Φ zone	Φ total	%lum, lamp
10	51.99	50.96	49.59	50.49	51.15	50.67	49.82	51.11	0- 10	4.845	4.845	2.19,2.19
20	52.26	50.10	46.26	48.85	50.34	49.04	46.80	50.26	10- 20	14.18	19.03	8.6,8.6
30	54.62	48.19	41.19	46.37	50.67	46.76	42.11	48.85	20- 30	22.35	41.37	18.7,18.7
40	53.75	47.77	35.12	44.95	50.87	45.66	36.14	48.73	30- 40	29.17	70.55	31.9,31.9
50	48.45	44.43	28.87	41.56	47.03	42.25	29.96	45.27	40- 50	33.46	104.0	47,47
60	45.05	36.76	23.00	35.00	43.39	35.19	23.87	37.44	50- 60	34.28	138.3	62.5,62.5
70	35.67	28.87	16.62	27.20	34.85	26.95	17.36	29.22	60- 70	31.62	169.9	76.8,76.8
80	19.74	17.87	9.858	16.25	19.38	15.98	10.20	17.88	70- 80	23.07	193.0	87.3,87.3
90	9.851	9.078	4.523	8.088	9.462	7.918	4.557	9.068	80- 90	12.65	205.6	93,93
100	5.769	4.767	2.135	4.333	5.563	4.318	2.149	4.803	90-100	6.270	211.9	95.8,95.8
110	3.943	2.926	1.454	2.669	3.844	2.657	1.508	3.000	100-110	3.627	215.5	97.5,97.5
120	2.613	1.785	1.039	1.581	2.502	1.633	1.169	1.867	110-120	2.212	217.7	98.5,98.5
130	1.641	1.053	0.8127	1.137	1.556	1.170	0.8198	1.130	120-130	1.293	219.0	99.1,99.1
140	1.028	1.035	0.6705	1.181	1.206	1.122	0.6377	0.9401	130-140	0.8234	219.9	99.4,99.4
150	1.057	0.9510	0.6778	0.9251	1.264	0.9623	0.6668	0.9260	140-150	0.6053	220.5	99.7,99.7
160	0.8895	0.7579	0.6596	0.6960	0.8525	0.7618	0.6668	0.7800	150-160	0.3937	220.9	99.9,99.9
170	0.7543	0.6814	0.6559	0.6559	0.6741	0.6742	0.7033	0.6960	160-170	0.2030	221.1	100,100
180	0.7434	0.7033	0.7069	0.7106	0.7361	0.6996	0.7033	0.6996	170-180	0.0657	221.1	100,100
DEG	LUMINOUS INTENSITY:cd									UNIT:lm		

C Range: 0 - 360DEG
 C Interval: 15.0DEG
 Test Speed: HIGH
 Temperature:22DEG
 Operators:Go
 Test Date:15 September 2020

γ Range: 0 - 180DEG
 γ Interval: 1.0DEG
 Test System:EVERFINE GO-2000A_V1 SYSTEM V2.0.295
 Humidity:88%
 Test Distance:7.710m [K=1.0000]
 Remarks:

LUMINANCE LIMITATION CURVES

NAME: MULTISAFE LED - 591 32 02 nEM V2	TYPE:	WEIGHT:
SPEC.:	DIM.: 408x208x155mm	SERIAL No.:
MFR.: Elektrosvit Svatoborice, a.s.	SUR.:	Shielding Angle:



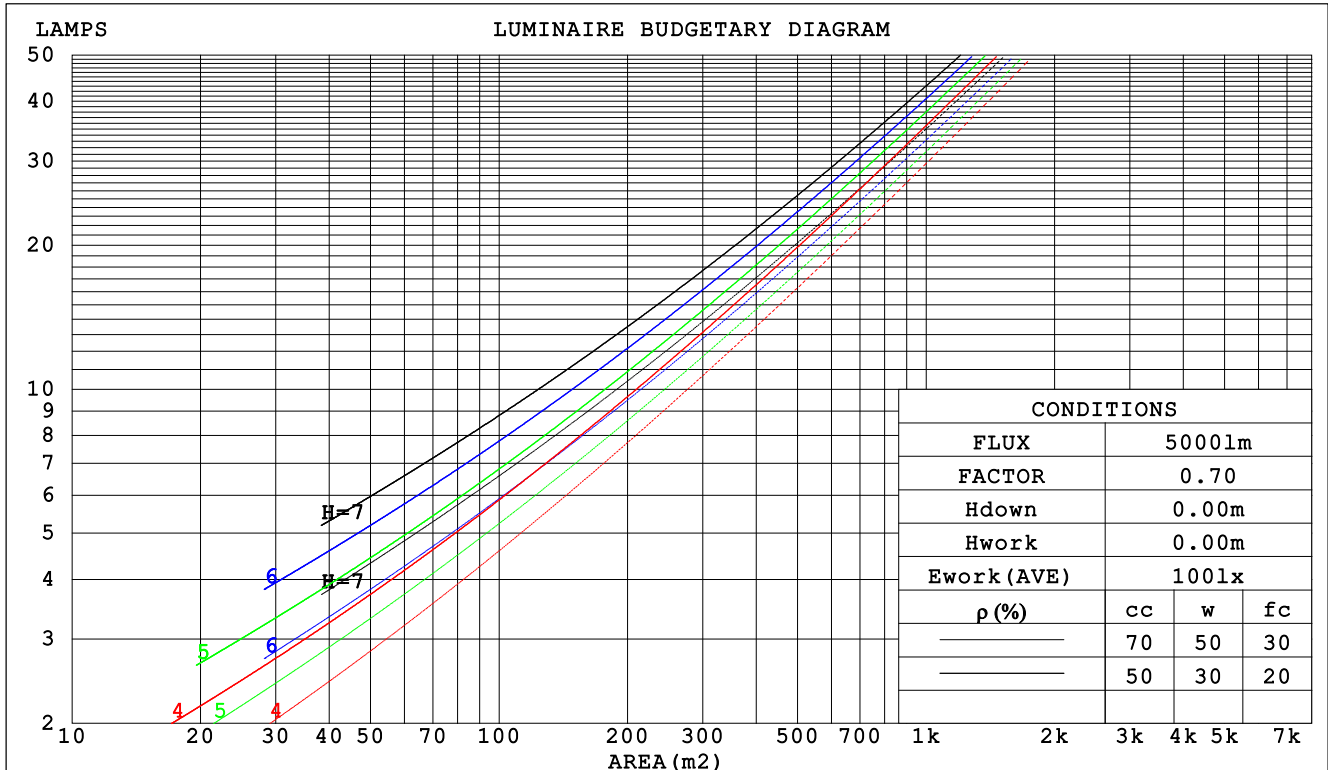
C Range: 0 - 360DEG
 C Interval: 15.0DEG
 Test Speed: HIGH
 Temperature: 22DEG
 Operators: Go
 Test Date: 15 September 2020

γ Range: 0 - 180DEG
 γ Interval: 1.0DEG
 Test System: EVERFINE GO-2000A_V1 SYSTEM V2.0.295
 Humidity: 88%
 Test Distance: 7.710m [K=1.0000]
 Remarks:

CU AND LUMINAIRE BUDGETARY ESTIMATE DIAGRAM

NAME: MULTISAFE LED - 591 32 02 nEM V2	TYPE:	WEIGHT:
SPEC.:	DIM.: 408x208x155mm	SERIAL No.:
MFR.: Elektrosvit Svatoborice, a.s.	SUR.:	Shielding Angle:

ρ_{cc}	80%			70%			50%			30%			10%			0
ρ_w	50%	30%	10%	50%	30%	10%	50%	30%	10%	50%	30%	10%	50%	30%	10%	0
ρ_{fc}	20%			20%			20%			20%			20%			0
RCR	RCR:Room Cavity Ratio						Coefficients of Utilization(CU)									
0.0	1.17	1.17	1.17	1.14	1.14	1.14	1.07	1.07	1.07	1.01	1.01	1.01	.96	.96	.96	.93
1.0	.99	.93	.89	.96	.91	.87	.90	.86	.82	.85	.82	.79	.80	.77	.75	.72
2.0	.84	.76	.70	.82	.74	.68	.77	.71	.65	.72	.67	.63	.68	.64	.60	.58
3.0	.73	.64	.56	.71	.62	.55	.66	.59	.53	.63	.57	.51	.59	.54	.50	.47
4.0	.64	.54	.47	.62	.53	.46	.58	.51	.44	.55	.48	.43	.52	.46	.42	.39
5.0	.56	.47	.39	.55	.46	.39	.52	.44	.38	.49	.42	.37	.46	.40	.36	.33
6.0	.50	.41	.34	.49	.40	.33	.46	.38	.32	.44	.37	.32	.42	.36	.31	.28
7.0	.45	.36	.29	.44	.35	.29	.42	.34	.28	.40	.33	.28	.38	.32	.27	.25
8.0	.41	.32	.26	.40	.32	.26	.38	.30	.25	.36	.29	.24	.35	.28	.24	.22
9.0	.38	.29	.23	.37	.28	.23	.35	.28	.22	.33	.27	.22	.32	.26	.21	.19
10.0	.34	.26	.21	.34	.26	.21	.32	.25	.20	.31	.24	.20	.29	.24	.19	.17



C Range: 0 - 360DEG
 C Interval: 15.0DEG
 Test Speed: HIGH
 Temperature:22DEG
 Operators:Go
 Test Date:15 September 2020

γ Range: 0 - 180DEG
 γ Interval: 1.0DEG
 Test System:EVERFINE GO-2000A_V1 SYSTEM V2.0.295
 Humidity:88%
 Test Distance:7.710m [K=1.0000]
 Remarks:

WEC AND CCEC

NAME: MULTISAFE LED - 591 32 02 nEM V2	TYPE:	WEIGHT:
SPEC.:	DIM.: 408x208x155mm	SERIAL No.:
MFR.: Elektrosvit Svatoborice, a.s.	SUR.:	Shielding Angle:

ρ_{cc}	80%			70%			50%			30%			10%			0
ρ_w	50%	30%	10%	50%	30%	10%	50%	30%	10%	50%	30%	10%	50%	30%	10%	0
ρ_{fc}	20%			20%			20%			20%			20%			0
RCR	RCR:Room Cavity Ratio						Wall Exitance Coefficients (WEC)									
0.0																
1.0	.378	.215	.068	.368	.210	.067	.351	.201	.064	.335	.193	.062	.320	.185	.060	
2.0	.336	.184	.057	.328	.180	.056	.312	.173	.054	.297	.167	.052	.284	.161	.051	
3.0	.302	.161	.048	.294	.158	.047	.280	.152	.046	.267	.146	.045	.255	.141	.044	
4.0	.273	.142	.042	.266	.139	.041	.253	.134	.040	.242	.130	.039	.231	.125	.038	
5.0	.249	.127	.037	.243	.125	.036	.231	.120	.035	.221	.116	.035	.211	.113	.034	
6.0	.228	.114	.033	.223	.112	.032	.212	.109	.032	.203	.105	.031	.194	.102	.030	
7.0	.210	.104	.029	.205	.102	.029	.196	.099	.029	.187	.096	.028	.179	.093	.027	
8.0	.195	.095	.027	.191	.094	.027	.182	.091	.026	.174	.088	.025	.167	.086	.025	
9.0	.182	.088	.025	.178	.087	.024	.170	.084	.024	.163	.082	.023	.156	.079	.023	
10.0	.170	.082	.023	.166	.080	.022	.159	.078	.022	.153	.076	.022	.146	.074	.021	

ρ_{cc}	80%			70%			50%			30%			10%			0
ρ_w	50%	30%	10%	50%	30%	10%	50%	30%	10%	50%	30%	10%	50%	30%	10%	0
ρ_{fc}	20%			20%			20%			20%			20%			0
RCR	RCR:Room Cavity Ratio						Ceiling Cavity Exitance Coefficients (CCEC)									
0.0	.244	.244	.244	.208	.208	.208	.142	.142	.142	.082	.082	.082	.026	.026	.026	
1.0	.239	.209	.183	.204	.180	.157	.140	.124	.109	.080	.072	.063	.026	.023	.020	
2.0	.232	.186	.147	.199	.160	.127	.136	.111	.089	.079	.064	.052	.025	.021	.017	
3.0	.225	.169	.124	.193	.146	.108	.132	.101	.076	.077	.059	.045	.025	.019	.015	
4.0	.217	.156	.109	.187	.135	.095	.128	.094	.067	.074	.055	.040	.024	.018	.013	
5.0	.210	.146	.099	.180	.127	.086	.124	.088	.061	.072	.052	.036	.023	.017	.012	
6.0	.202	.138	.092	.174	.120	.080	.120	.084	.057	.070	.049	.034	.022	.016	.011	
7.0	.195	.131	.087	.168	.114	.076	.116	.080	.054	.067	.047	.032	.022	.015	.011	
8.0	.188	.126	.083	.162	.109	.072	.112	.077	.051	.065	.045	.031	.021	.015	.010	
9.0	.182	.121	.080	.157	.105	.070	.108	.074	.049	.063	.044	.029	.020	.014	.010	
10.0	.176	.117	.077	.151	.101	.067	.105	.071	.048	.061	.042	.029	.020	.014	.009	

C Range: 0 - 360DEG
 C Interval: 15.0DEG
 Test Speed: HIGH
 Temperature: 22DEG
 Operators: Go
 Test Date: 15 September 2020

γ Range: 0 - 180DEG
 γ Interval: 1.0DEG
 Test System: EVERFINE GO-2000A_V1 SYSTEM V2.0.295
 Humidity: 88%
 Test Distance: 7.710m [K=1.0000]
 Remarks:

UGR(Unified Glare Rating) Table

NAME: MULTISAFE LED - 591 32 02 nEM V2					TYPE:					WEIGHT:				
SPEC.:					DIM.: 408x208x155mm					SERIAL No.:				
MFR.: Elektrosvit Svatoborice, a.s.					SUR.:					Shielding Angle:				
ceiling/cavity	0.7	0.7	0.5	0.5	0.3	0.7	0.7	0.5	0.5	0.3				
walls	0.5	0.3	0.5	0.3	0.3	0.5	0.3	0.5	0.3	0.3				
working plane	0.2	0.2	0.2	0.2	0.2	0.2	0.2	0.2	0.2	0.2				
Room dimensions	Viewed crosswise					Viewed endwise								
x = 2H y = 2H	14.7	16.3	15.1	16.6	17.0	12.2	13.8	12.6	14.1	14.5				
3H	17.3	18.7	17.7	19.1	19.4	14.0	15.4	14.4	15.8	16.2				
4H	18.3	19.7	18.7	20.1	20.5	14.8	16.2	15.2	16.5	17.0				
6H	19.2	20.5	19.6	20.9	21.3	15.5	16.8	15.9	17.2	17.6				
8H	19.6	20.9	20.1	21.3	21.7	15.8	17.1	16.3	17.5	17.9				
12H	20.0	21.2	20.5	21.7	22.1	16.2	17.4	16.6	17.8	18.3				
4H 2H	15.3	16.7	15.7	17.1	17.5	13.5	14.9	14.0	15.3	15.7				
3H	18.1	19.3	18.5	19.7	20.1	15.5	16.7	16.0	17.2	17.6				
4H	19.3	20.4	19.8	20.9	21.3	16.4	17.6	16.9	18.0	18.5				
6H	20.4	21.4	20.9	21.8	22.4	17.3	18.3	17.8	18.8	19.3				
8H	20.9	21.8	21.4	22.3	22.9	17.7	18.6	18.2	19.1	19.6				
12H	21.4	22.3	21.9	22.8	23.3	18.1	18.9	18.6	19.4	20.0				
8H 4H	19.6	20.5	20.1	21.0	21.6	17.3	18.2	17.8	18.7	19.2				
6H	20.9	21.7	21.5	22.2	22.8	18.4	19.2	18.9	19.7	20.3				
8H	21.6	22.3	22.2	22.9	23.5	18.9	19.6	19.5	20.2	20.8				
12H	22.3	23.0	22.9	23.5	24.2	19.5	20.1	20.1	20.7	21.3				
12H 4H	19.6	20.5	20.2	21.0	21.6	17.4	18.3	18.0	18.8	19.4				
6H	21.0	21.7	21.6	22.3	22.9	18.7	19.4	19.3	19.9	20.5				
8H	21.8	22.4	22.4	23.0	23.6	19.4	20.0	19.9	20.5	21.2				
Variations with the observer position at spacings:														
S = 1.0H	+ 0.1 / - 0.1					+ 0.1 / - 0.1								
1.5H	+ 0.2 / - 0.2					+ 0.3 / - 0.4								
2.0H	+ 0.2 / - 0.4					+ 0.3 / - 0.6								

CIE Pub.117 Corrected 221.1 lm Total Lamp Luminous Flux. (8log(F/F0) = -5.2)

C Range: 0 - 360DEG
 C Interval: 15.0DEG
 Test Speed: HIGH
 Temperature: 22DEG
 Operators: Go
 Test Date: 15 September 2020

γ Range: 0 - 180DEG
 γ Interval: 1.0DEG
 Test System: EVERFINE GO-2000A_V1 SYSTEM V2.0.295
 Humidity: 88%
 Test Distance: 7.710m [K=1.0000]
 Remarks:

UTILIZATION FACTORS TABLE

NAME: MULTISAFE LED - 591 32 02 nEM V2	TYPE:	WEIGHT:
SPEC.:	DIM.: 408x208x155mm	SERIAL No.:
MFR.: Elektrosvit Svatoborice, a.s.	SUR.:	Shielding Angle:

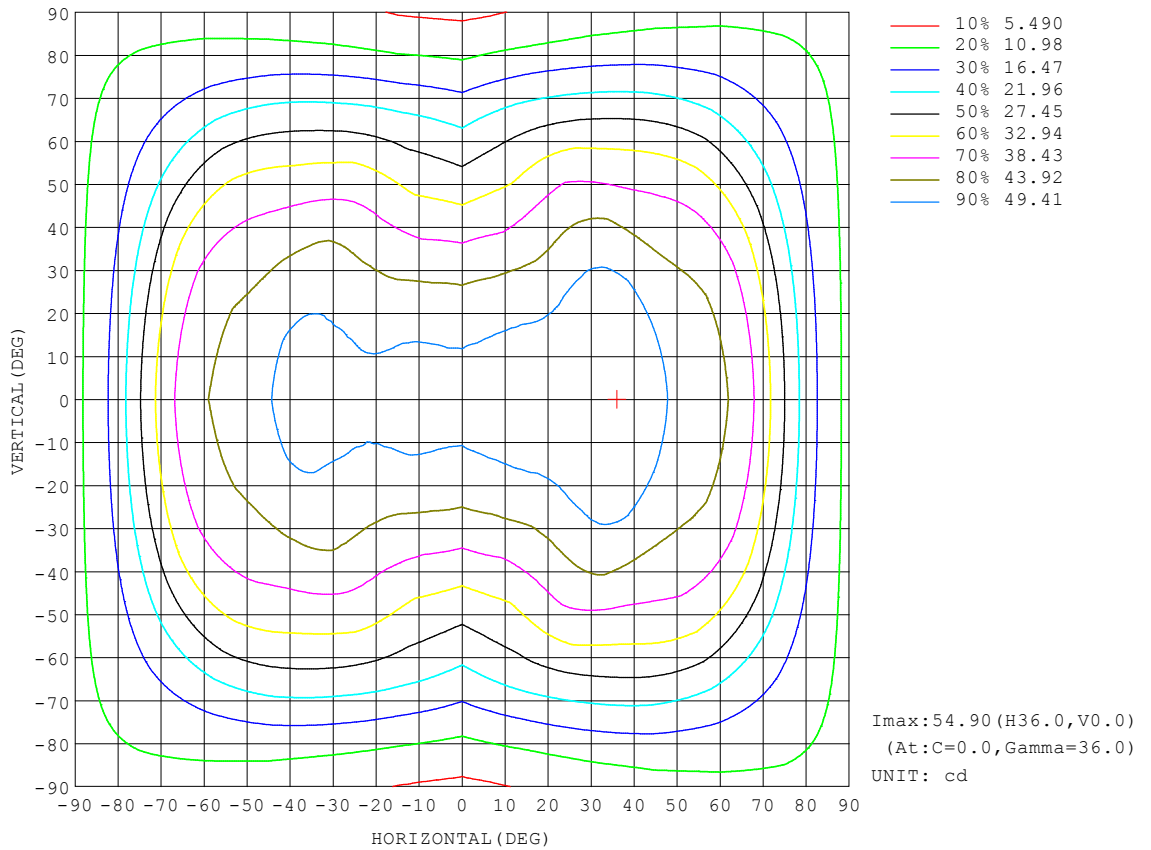
REFLECTANCE										
Ceiling	0.8	0.8	0.8	0.7	0.7	0.7	0.5	0.5	0.5	0
Walls	0.7	0.5	0.3	0.7	0.5	0.3	0.7	0.5	0.3	0
Working plane	0.2	0.2	0.2	0.2	0.2	0.2	0.2	0.2	0.2	0
ROOM INDEX	UTILIZATION FACTORS (PERCENT) $k(RI) \times RCR = 5$									
k = 0.60	50	38	30	49	37	30	48	37	30	23
0.80	60	47	39	58	46	38	56	45	38	30
1.00	68	55	47	66	54	46	63	56	46	37
1.25	75	63	54	73	62	54	70	60	53	44
1.50	80	68	60	78	67	59	74	65	58	49
2.00	88	77	69	85	76	68	81	73	66	56
2.50	92	83	75	90	81	74	85	77	71	61
3.00	96	87	80	93	85	79	88	82	76	65
4.00	101	93	87	98	91	86	92	87	82	71
5.00	104	97	92	101	95	90	95	90	86	74
ROOM INDEX	UF(total)									Direct
According to DIN EN 13032-2 2004			Suspended				SHRNM = 1.25			

C Range: 0 - 360DEG
 C Interval: 15.0DEG
 Test Speed: HIGH
 Temperature: 22DEG
 Operators: Go
 Test Date: 15 September 2020

γ Range: 0 - 180DEG
 γ Interval: 1.0DEG
 Test System: EVERFINE GO-2000A_V1 SYSTEM V2.0.295
 Humidity: 88%
 Test Distance: 7.710m [K=1.0000]
 Remarks:

ISOCANDELA DIAGRAM

NAME: MULTISAFE LED - 591 32 02 nEM V2	TYPE:	WEIGHT:
SPEC.:	DIM.: 408x208x155mm	SERIAL No.:
MFR.: Elektrosvit Svatoborice, a.s.	SUR.:	Shielding Angle:

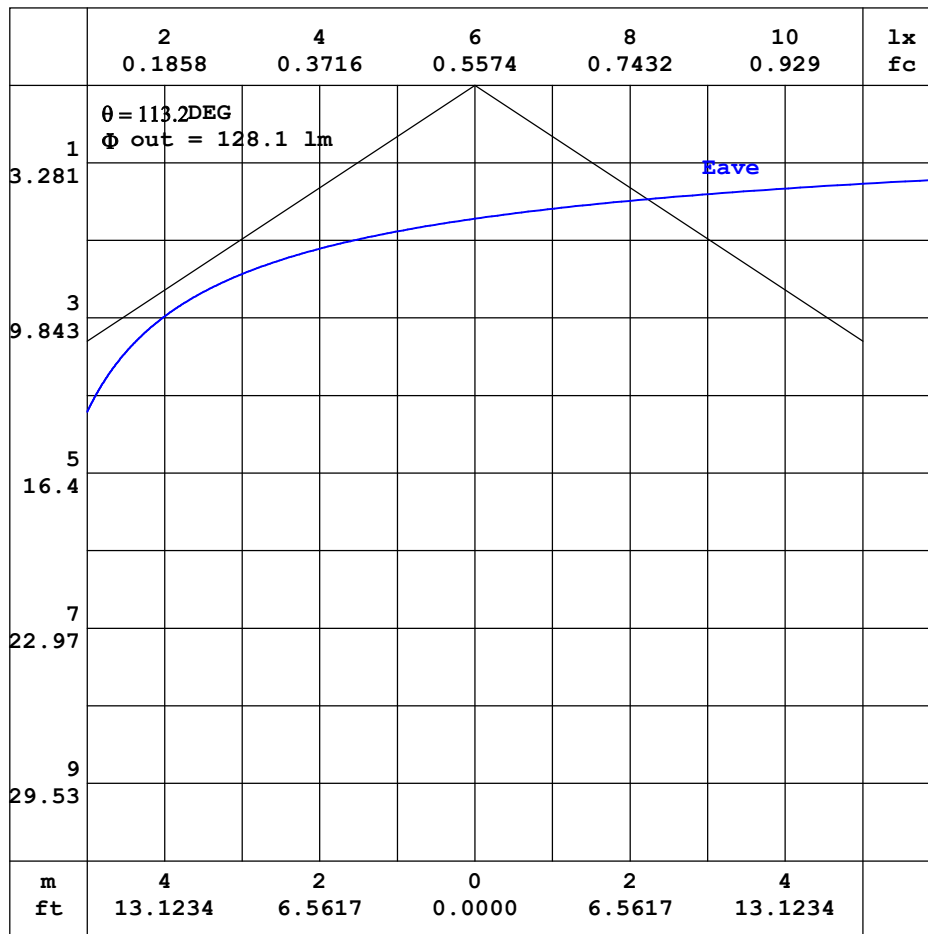


C Range: 0 - 360DEG
 C Interval: 15.0DEG
 Test Speed: HIGH
 Temperature: 22DEG
 Operators: Go
 Test Date: 15 September 2020

γ Range: 0 - 180DEG
 γ Interval: 1.0DEG
 Test System: EVERFINE GO-2000A_V1 SYSTEM V2.0.295
 Humidity: 88%
 Test Distance: 7.710m [K=1.0000]
 Remarks:

AAI CURVES

NAME: MULTISAFE LED - 591 32 02 nEM V2	TYPE:	WEIGHT:
SPEC.:	DIM.: 408x208x155mm	SERIAL No.:
MFR.: Elektrosvit Svatoborice, a.s.	SUR.:	Shielding Angle:



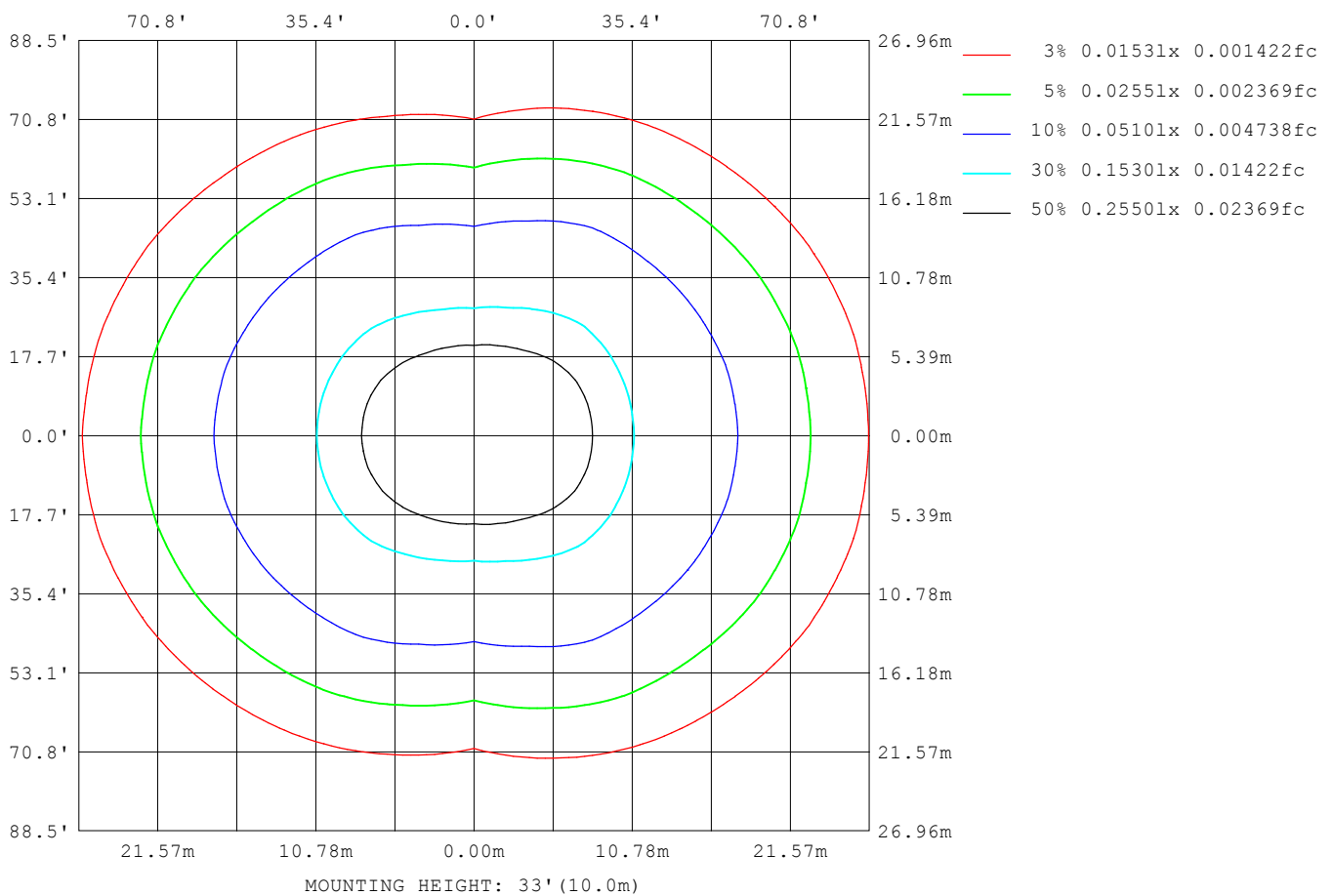
Note: The Curves indicate the illuminated area and the average illumination when the luminaire is at different distance.

C Range: 0 - 360DEG
 C Interval: 15.0DEG
 Test Speed: HIGH
 Temperature: 22DEG
 Operators: Go
 Test Date: 15 September 2020

γ Range: 0 - 180DEG
 γ Interval: 1.0DEG
 Test System: EVERFINE GO-2000A_V1 SYSTEM V2.0.295
 Humidity: 88%
 Test Distance: 7.710m [K=1.0000]
 Remarks:

ISOLUX DIAGRAM

NAME: MULTISAFE LED - 591 32 02 nEM V2	TYPE:	WEIGHT:
SPEC.:	DIM.: 408x208x155mm	SERIAL No.:
MFR.: Elektrosvit Svatoborice, a.s.	SUR.:	Shielding Angle:



C Range: 0 - 360DEG
 C Interval: 15.0DEG
 Test Speed: HIGH
 Temperature: 22DEG
 Operators: Go
 Test Date: 15 September 2020

γ Range: 0 - 180DEG
 γ Interval: 1.0DEG
 Test System: EVERFINE GO-2000A_V1 SYSTEM V2.0.295
 Humidity: 88%
 Test Distance: 7.710m [K=1.0000]
 Remarks:

LED Avg.L Report

NAME: MULTISAFE LED - 591 32 02 nEM V2	TYPE:	WEIGHT:
SPEC.:	DIM.: 408x208x155mm	SERIAL No.:
MFR.: Elektrosvit Svatoborice, a.s.	SUR.:	Shielding Angle:

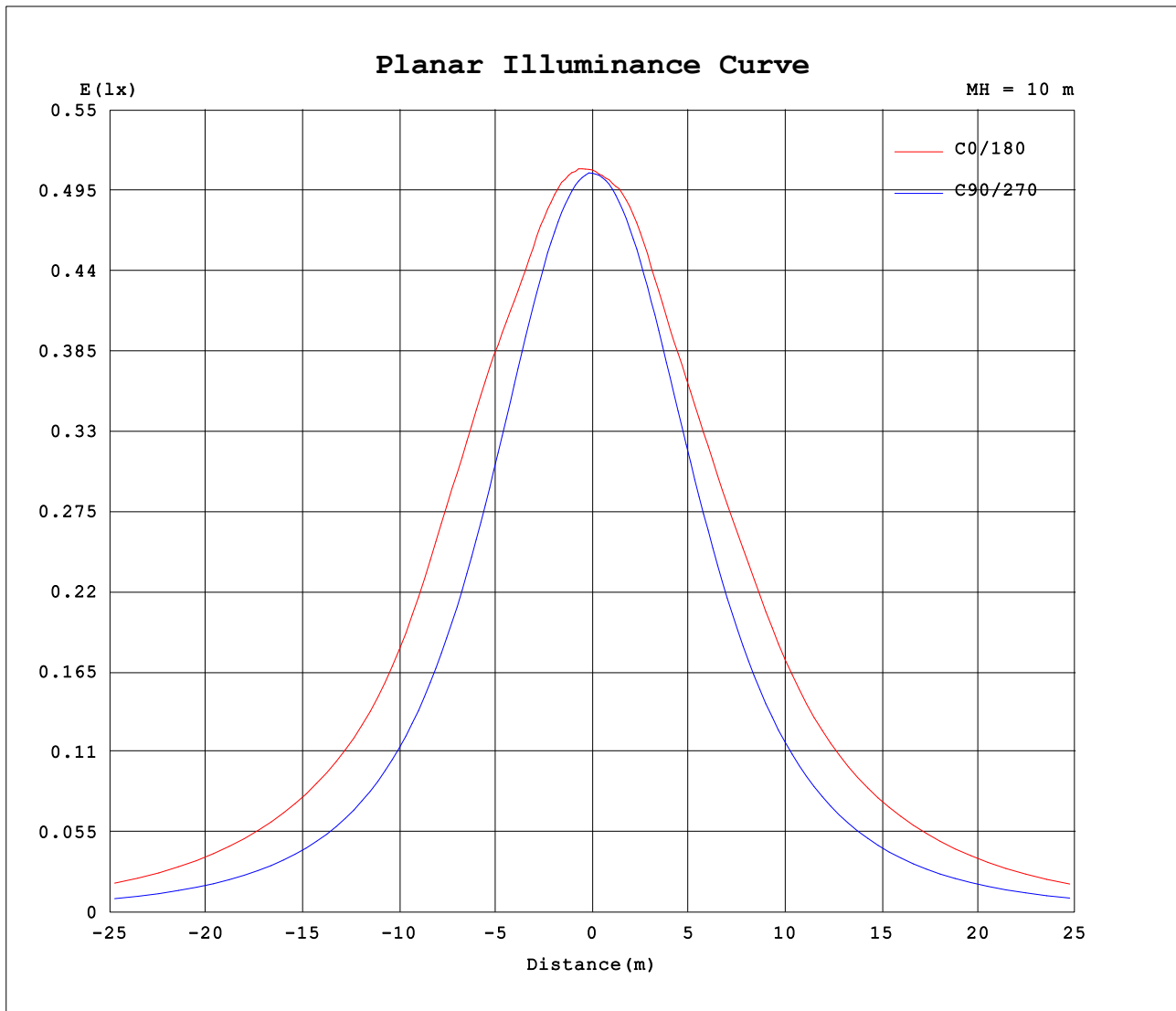
AvgL	cd/m2
L_0~180 (65) av	1800
L_0~180 (75) av	1964
L_0~180 (85) av	2945
L_90~270 (65) av	898
L_90~270 (75) av	974
L_90~270 (85) av	1481
L_45 (65) av	1433
L_45 (75) av	1635
L_45 (85) av	2608

Standard: GB/T 29293-2012

C Range: 0 - 360DEG
 C Interval: 15.0DEG
 Test Speed: HIGH
 Temperature:22DEG
 Operators:Go
 Test Date:15 September 2020

γ Range: 0 - 180DEG
 γ Interval: 1.0DEG
 Test System:EVERFINE GO-2000A_V1 SYSTEM V2.0.295
 Humidity:88%
 Test Distance:7.710m [K=1.0000]
 Remarks:

Planar Illuminance Curve



C Range: 0 - 360DEG
 C Interval: 15.0DEG
 Test Speed: HIGH
 Temperature: 22DEG
 Operators: Go
 Test Date: 15 September 2020

γ Range: 0 - 180DEG
 γ Interval: 1.0DEG
 Test System: EVERFINE GO-2000A_V1 SYSTEM V2.0.295
 Humidity: 88%
 Test Distance: 7.710m [K=1.0000]
 Remarks:

LUMINOUS DISTRIBUTION INTENSITY DATA

NAME: MULTISAFE LED - 591 32 02 nEM V2	TYPE:	WEIGHT:
SPEC.:	DIM.: 408x208x155mm	SERIAL No.:
MFR.: Elektrosvit Svatoborice, a.s.	SUR.:	Shielding Angle:

Table--1

UNIT: cd

C (DEG) \ γ (DEG)	0	15	30	45	60	75	90	105	120	135	150	165	180	195	210	225	240	255	270
0	50.9	50.8	50.7	50.8	50.8	50.7	50.7	50.7	50.7	50.8	50.8	50.8	50.9	50.8	50.7	50.8	50.8	50.7	50.7
5	51.4	51.3	51.2	50.9	50.6	50.5	50.4	50.4	50.5	50.6	50.7	50.7	50.8	50.9	50.8	50.7	50.5	50.4	50.5
10	52.0	51.8	51.5	51.0	50.3	50.1	49.6	49.7	50.0	50.5	50.8	50.9	51.2	51.1	50.9	50.7	50.1	49.9	49.8
15	52.3	52.0	51.5	50.7	49.6	48.9	48.2	48.6	49.1	50.1	50.5	50.7	50.9	50.9	50.6	50.0	49.4	48.7	48.6
20	52.3	52.0	51.2	50.1	48.6	47.2	46.3	46.9	47.8	48.9	49.6	50.0	50.3	50.1	49.6	49.0	48.2	47.3	46.8
25	53.4	52.9	51.1	49.1	46.9	45.1	43.9	44.7	46.0	47.5	48.9	50.0	50.4	50.1	49.0	47.7	46.5	45.3	44.7
30	54.6	53.8	51.7	48.2	45.1	42.6	41.2	42.2	43.9	46.4	48.8	50.2	50.7	50.4	49.1	46.8	44.5	42.8	42.1
35	54.8	54.3	52.2	48.0	43.3	39.9	38.1	39.5	42.0	45.6	48.7	50.3	50.9	50.7	49.2	46.2	42.6	40.1	39.2
40	53.8	53.5	52.0	47.8	41.7	37.1	35.1	36.7	40.2	45.0	48.4	50.1	50.9	50.6	48.9	45.7	40.9	37.4	36.1
45	51.0	50.7	49.9	46.8	40.4	34.5	31.9	34.1	38.7	43.8	46.8	48.4	49.1	48.7	47.3	44.6	39.5	34.8	33.0
50	48.5	47.8	46.5	44.4	39.1	32.1	28.9	31.5	37.0	41.6	44.1	46.1	47.0	46.4	44.5	42.3	37.9	32.2	30.0
55	46.9	45.8	43.3	40.6	36.9	29.7	25.9	29.1	34.8	38.3	41.5	44.1	45.2	44.3	41.7	38.8	35.5	29.7	26.9
60	45.1	43.9	40.7	36.8	33.5	27.4	23.0	26.7	31.6	35.0	39.0	42.1	43.4	42.3	39.0	35.2	32.0	27.0	23.9
65	41.5	40.7	37.6	33.1	29.3	24.4	20.0	23.6	27.8	31.5	35.7	38.8	40.1	38.9	35.7	31.4	27.9	23.8	20.7
70	35.7	35.3	33.0	28.9	24.8	20.6	16.6	19.8	23.5	27.2	31.0	33.8	34.8	33.6	30.9	26.9	23.4	19.9	17.4
75	27.5	27.8	26.5	23.6	20.0	16.4	13.2	15.7	18.6	21.9	24.6	26.4	27.0	26.2	24.4	21.6	18.6	15.6	13.8
80	19.7	20.2	19.5	17.9	15.2	12.3	9.86	11.7	14.0	16.3	17.9	19.0	19.4	18.7	17.8	16.0	13.9	11.4	10.2
85	13.9	14.2	13.9	12.9	11.0	8.67	6.84	8.12	9.95	11.6	12.7	13.4	13.6	13.2	12.6	11.4	9.89	7.84	7.00
90	9.85	9.99	9.77	9.08	7.65	5.82	4.52	5.38	6.85	8.09	8.85	9.44	9.46	9.32	8.82	7.92	6.80	5.19	4.56
95	7.25	7.32	7.03	6.39	5.21	3.79	2.94	3.51	4.66	5.71	6.42	6.89	7.06	6.83	6.39	5.64	4.64	3.44	2.91
100	5.77	5.69	5.40	4.77	3.79	2.73	2.14	2.54	3.43	4.33	4.99	5.35	5.56	5.38	4.96	4.32	3.42	2.54	2.15
105	4.85	4.72	4.33	3.72	2.88	2.03	1.72	1.92	2.61	3.38	4.04	4.45	4.65	4.51	4.02	3.38	2.60	1.96	1.74
110	3.94	3.85	3.52	2.93	2.22	1.62	1.45	1.53	2.00	2.67	3.24	3.64	3.84	3.68	3.24	2.66	2.02	1.61	1.51
115	3.23	3.16	2.86	2.31	1.72	1.31	1.27	1.26	1.57	2.05	2.60	2.98	3.09	2.97	2.58	2.09	1.62	1.37	1.34
120	2.61	2.55	2.25	1.78	1.34	1.09	1.04	1.05	1.26	1.58	2.03	2.39	2.50	2.38	2.00	1.63	1.29	1.20	1.17
125	2.09	2.04	1.79	1.33	1.06	0.94	0.89	0.93	1.06	1.27	1.60	1.86	1.97	1.88	1.55	1.30	1.06	1.03	0.95
130	1.64	1.60	1.41	1.05	0.95	0.94	0.81	0.87	0.99	1.14	1.35	1.51	1.56	1.53	1.30	1.17	1.00	0.93	0.82
135	1.28	1.24	1.13	1.01	0.94	0.86	0.76	0.81	0.99	1.16	1.23	1.31	1.34	1.37	1.22	1.09	0.96	0.81	0.69
140	1.03	1.02	1.01	1.04	0.99	0.81	0.67	0.71	0.98	1.18	1.21	1.22	1.21	1.23	1.22	1.12	0.88	0.71	0.64
145	0.98	1.04	1.04	1.04	0.95	0.75	0.68	0.69	0.89	1.05	1.22	1.26	1.22	1.25	1.26	1.08	0.82	0.70	0.65
150	1.06	1.11	1.11	0.95	0.85	0.71	0.68	0.66	0.80	0.93	1.11	1.27	1.26	1.29	1.11	0.96	0.78	0.70	0.67
155	1.01	0.98	0.96	0.83	0.77	0.66	0.67	0.65	0.71	0.81	0.91	0.98	1.04	1.02	0.92	0.85	0.71	0.70	0.67
160	0.89	0.86	0.85	0.76	0.72	0.66	0.66	0.65	0.66	0.70	0.80	0.83	0.85	0.87	0.81	0.76	0.68	0.69	0.67
165	0.81	0.75	0.77	0.69	0.69	0.66	0.66	0.66	0.65	0.66	0.70	0.71	0.76	0.77	0.70	0.70	0.67	0.67	0.67
170	0.75	0.70	0.71	0.68	0.68	0.68	0.66	0.69	0.65	0.66	0.66	0.66	0.67	0.69	0.67	0.67	0.67	0.67	0.70
175	0.71	0.71	0.70	0.69	0.68	0.70	0.69	0.71	0.67	0.69	0.65	0.67	0.67	0.67	0.68	0.67	0.70	0.70	0.70
180	0.74	0.73	0.70	0.70	0.70	0.70	0.71	0.71	0.71	0.71	0.70	0.73	0.74	0.71	0.71	0.70	0.71	0.70	0.70

C Range: 0 - 360DEG
 C Interval: 15.0DEG
 Test Speed: HIGH
 Temperature: 22DEG
 Operators: Go
 Test Date: 15 September 2020

γ Range: 0 - 180DEG
 γ Interval: 1.0DEG
 Test System: EVERFINE GO-2000A_V1 SYSTEM V2.0.295
 Humidity: 88%
 Test Distance: 7.710m [K=1.0000]
 Remarks:

LUMINOUS DISTRIBUTION INTENSITY DATA

NAME: MULTISAFE LED - 591 32 02 nEM V2	TYPE:	WEIGHT:
SPEC.:	DIM.: 408x208x155mm	SERIAL No.:
MFR.: Elektrosvit Svatoborice, a.s.	SUR.:	Shielding Angle:

Table--2

UNIT: cd

C (DEG) \ γ (DEG)	285	300	315	330	345														
0	50.7	50.7	50.8	50.8	50.8														
5	50.6	50.8	51.0	51.2	51.2														
10	50.0	50.6	51.1	51.5	51.8														
15	49.1	49.9	50.8	51.6	51.9														
20	47.7	48.9	50.3	51.2	52.0														
25	45.8	47.5	49.4	51.2	52.8														
30	43.6	45.9	48.9	52.0	53.8														
35	41.0	44.2	48.9	52.5	54.3														
40	38.4	42.8	48.7	52.2	53.6														
45	35.9	41.8	47.8	50.1	50.6														
50	33.5	40.3	45.3	46.6	47.8														
55	31.2	38.1	41.3	43.4	45.9														
60	28.8	34.6	37.4	40.8	43.9														
65	25.6	30.2	33.7	37.7	40.7														
70	21.7	25.5	29.2	32.9	35.2														
75	17.3	20.5	23.7	26.4	27.5														
80	12.8	15.5	17.9	19.5	19.9														
85	8.87	11.2	12.9	13.9	14.0														
90	5.91	7.80	9.07	9.80	9.92														
95	3.83	5.27	6.38	7.04	7.28														
100	2.76	3.85	4.80	5.39	5.69														
105	2.10	2.92	3.76	4.39	4.75														
110	1.69	2.28	3.00	3.51	3.88														
115	1.41	1.80	2.39	2.85	3.15														
120	1.19	1.41	1.87	2.24	2.56														
125	0.96	1.10	1.42	1.75	2.04														
130	0.86	0.93	1.13	1.39	1.62														
135	0.80	0.83	0.98	1.10	1.28														
140	0.73	0.82	0.94	1.01	1.05														
145	0.72	0.82	0.99	1.06	1.01														
150	0.71	0.82	0.93	1.06	1.07														
155	0.71	0.76	0.87	0.93	1.01														
160	0.70	0.70	0.78	0.82	0.87														
165	0.68	0.69	0.73	0.73	0.80														
170	0.67	0.69	0.70	0.70	0.75														
175	0.69	0.71	0.69	0.70	0.70														
180	0.71	0.71	0.70	0.70	0.72														

C Range: 0 - 360DEG
 C Interval: 15.0DEG
 Test Speed: HIGH
 Temperature:22DEG
 Operators:Go
 Test Date:15 September 2020

γ Range: 0 - 180DEG
 γ Interval: 1.0DEG
 Test System:EVERFINE GO-2000A_V1 SYSTEM V2.0.295
 Humidity:88%
 Test Distance:7.710m [K=1.0000]
 Remarks: