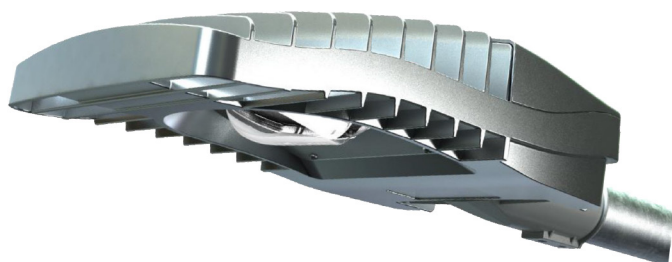


ES CONTURA DA

Use:

Light fitting for the illumination of roads, parks, car parks, public areas as well as industrial spaces.



CE	230V 50Hz		EVG 	EVG DIMM
IP65 electro	IP68 optics		Ta -40°C ÷ +40°C	
Carton (mm/pcs): 550 x 280 x 150 / 1				



Technical description:

The light fitting body is an aluminium casting finished with powder paint. There is an LED module built inside the light fitting. The reflector is made of chemically polished aluminium sheet. The max. cross-section of the connecting conductors is 4 mm².

Installation:

mounting method ø60 mm.

Versions:

The light fittings are made in a version with an electronic adjustable ballast (EVG DIMM). Light fittings are provided with a self-resetting thermal fuse.

Type	Number of chips	Power input [W]	Luminous flux [lm]	Dimensions [mm]	Weight [kg]
ES CONTURA DA30	1	21	3000	512.5x255x117.5	6.6
ES CONTURA DA40	1	29	4000	512.5x255x117.5	6.6
ES CONTURA DA50	1	38	5000	512.5x255x117.5	6.6
ES CONTURA DA60	1	46	6000	512.5x255x117.5	6.6
ES CONTURA DA70	1	54	7000	512.5x255x117.5	6.6
ES CONTURA DA80	1	62	8000	512.5x255x117.5	6.6
ES CONTURA DA90	1	69	9000	512.5x255x117.5	6.6
ES CONTURA DA100	1	77	10000	512.5x255x117.5	6.6
ES CONTURA DA110	1	85	11000	512.5x255x117.5	6.6
ES CONTURA DA120	2	92	12000	512.5x255x117.5	6.9
ES CONTURA DA130	2	93	13000	512.5x255x117.5	6.9
ES CONTURA DA140	2	100	14000	512.5x255x117.5	6.9
ES CONTURA DA150	2	107	15000	512.5x255x117.5	6.9
ES CONTURA DA160	2	114	16000	512.5x255x117.5	6.9
ES CONTURA DA170	2	126	17000	512.5x255x117.5	6.9
ES CONTURA DA180	2	133	18000	512.5x255x117.5	6.9
ES CONTURA DA200	2	154	20000	512.5x255x117.5	6.9