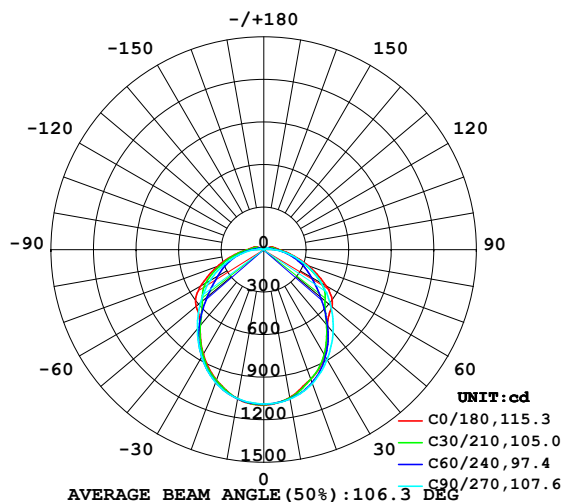


LUMINAIRE PHOTOMETRIC TEST REPORT

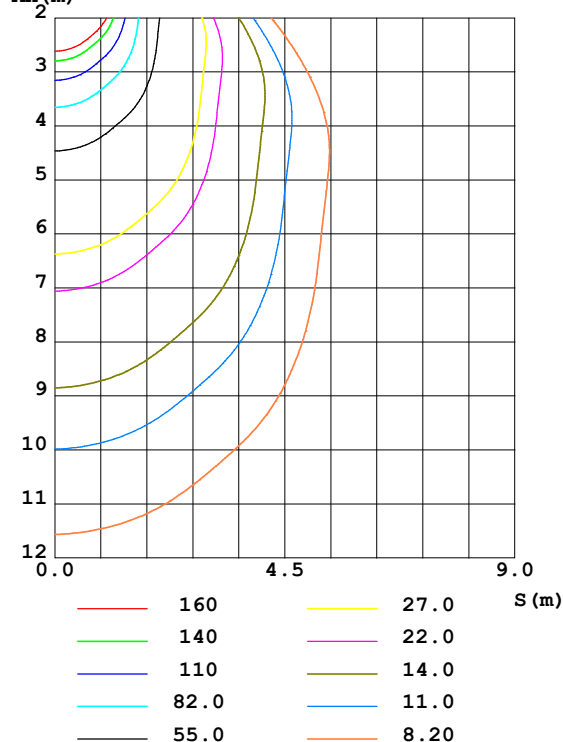
NAME: TYP 591 32 01n	TYPE:	WEIGHT:
SPEC.:	DIM.: 420x230x165mm	SERIAL No.:
MFR.: Elektrosvit Svatoborice, a.s.	SUR.:	Shielding Angle:

DATA OF LAMP		PHOTOMETRIC DATA				Eff: 94.16 lm/W
MODEL		I _{max} (cd)	1096	S/MH (C0/180)	1.17	
NOMINAL POWER (W)	34.0749	LOR (%)	100.0	S/MH (C90/270)	1.20	
RATED VOLTAGE (V)	230.211	TOTAL FLUX (lm)	3208.4	η UP, DN (C0-180)	2.8, 47.4	
NOMINAL FLUX (lm)	3208.43	CIE CLASS	DIRECT	η UP, DN (C180-360)	2.8, 47.0	
LAMPS INSIDE	1	η up (%)	5.6	CIBSE SHR NOM	1.25	
TEST VOLTAGE (V)	230.211	η down (%)	94.4	CIBSE SHR MAX	1.30	

LUMINOUS INTENSITY DISTRIBUTION DIAGRAM



C0 PLANE ISOLUX DIAGRAM (UNIT: lx)



C Range: 0 - 360DEG
C Interval: 15.0DEG
Test Speed: HIGH
Temperature: 24DEG
Operators: Go
Test Date: 30 October 2019

γ Range: 0 - 180DEG
γ Interval: 1.0DEG
Test System: EVERFINE GO-2000A_V1 SYSTEM V2.0.295
Humidity: 43%
Test Distance: 7.710m [K=1.0000]
Remarks:

ZONAL FLUX DIAGRAM

ZONAL FLUX DIAGRAM:

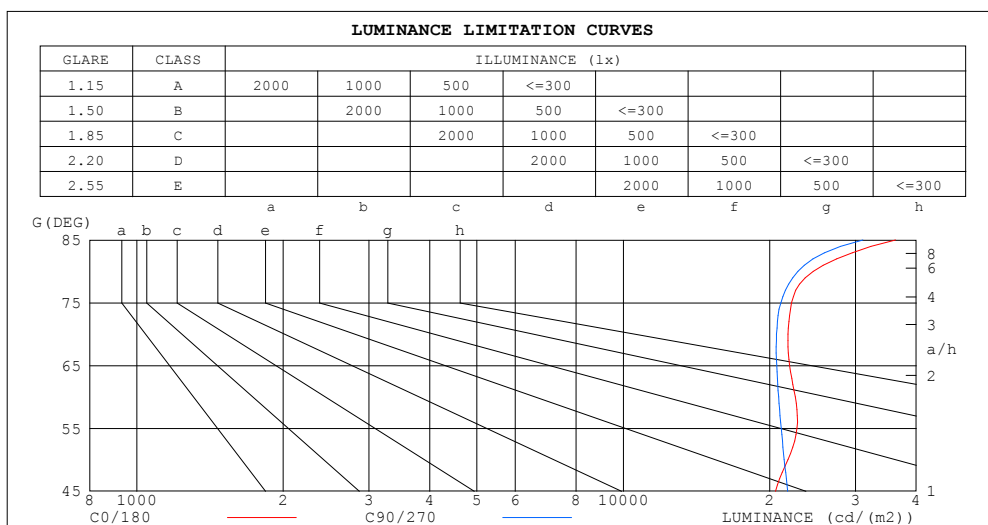
γ	C0	C45	C90	C135	C180	C225	C270	C315	γ	Φ zone	Φ total	%lum, lamp
10	1059	1065	1070	1066	1069	1067	1067	1055	0- 10	102.8	102.8	3.2,3.2
20	971.5	982.9	1004	991.4	978.2	986.8	996.1	976.6	10- 20	290.2	392.9	12.2,12.2
30	856.7	848.3	894.0	858.1	852.0	868.2	875.0	865.4	20- 30	428.8	821.7	25.6,25.6
40	699.2	683.8	761.0	687.1	700.3	696.8	729.4	699.4	30- 40	493.8	1315	41,41
50	627.7	529.4	616.8	533.0	623.4	528.0	583.1	528.5	40- 50	490.5	1806	56.3,56.3
60	505.4	426.5	467.3	436.6	513.3	421.7	439.3	430.7	50- 60	456.8	2263	70.5,70.5
70	334.1	298.3	316.6	309.6	350.1	299.9	290.2	300.9	60- 70	371.4	2634	82.1,82.1
80	191.3	168.6	177.9	178.9	207.2	177.5	156.7	173.9	70- 80	251.8	2886	89.9,89.9
90	107.2	92.35	71.69	98.12	115.4	98.23	63.83	96.30	80- 90	142.9	3029	94.4,94.4
100	79.10	60.42	38.71	63.62	81.78	62.86	32.65	63.93	90-100	81.17	3110	96.9,96.9
110	57.75	27.00	26.40	26.21	59.13	20.88	21.46	22.73	100-110	52.16	3162	98.6,98.6
120	8.032	7.219	20.33	6.362	7.892	5.680	15.11	5.768	110-120	19.58	3182	99.2,99.2
130	7.080	7.004	8.942	6.527	6.880	6.397	7.095	6.594	120-130	7.260	3189	99.4,99.4
140	8.031	8.108	8.319	7.591	7.827	7.585	7.747	7.898	130-140	5.744	3195	99.6,99.6
150	9.179	9.323	9.123	8.677	9.023	8.701	8.942	9.033	140-150	5.273	3200	99.7,99.7
160	10.22	10.39	10.09	9.709	10.08	9.819	9.937	10.11	150-160	4.394	3204	99.9,99.9
170	11.00	10.91	10.65	10.53	10.96	10.67	10.57	10.69	160-170	2.939	3207	100,100
180	11.21	11.07	10.93	10.91	11.22	11.05	10.92	10.91	170-180	1.034	3208	100,100
DEG	LUMINOUS INTENSITY:cd									UNIT:lm		

C Range: 0 - 360DEG
C Interval: 15.0DEG
Test Speed: HIGH
Temperature:24DEG
Operators:Go
Test Date:30 October 2019

γ Range: 0 - 180DEG
 γ Interval: 1.0DEG
Test System:EVERFINE GO-2000A_V1 SYSTEM V2.0.295
Humidity:43%
Test Distance:7.710m [K=1.0000]
Remarks:

LUMINANCE LIMITATION CURVES

NAME: TYP 591 32 01n	TYPE:	WEIGHT:
SPEC.:	DIM.: 420x230x165mm	SERIAL No.:
MFR.: Elektrosvit Svatoborice, a.s.	SUR.:	Shielding Angle:



LUMINANCE cd/(m2)		
G (DEG)	C0/180	C90/270
85	36264	31074
80	24585	22869
75	22185	21079
70	21806	20660
65	21981	20664
60	22560	20861
55	22756	21118
50	21798	21420
45	20559	21778

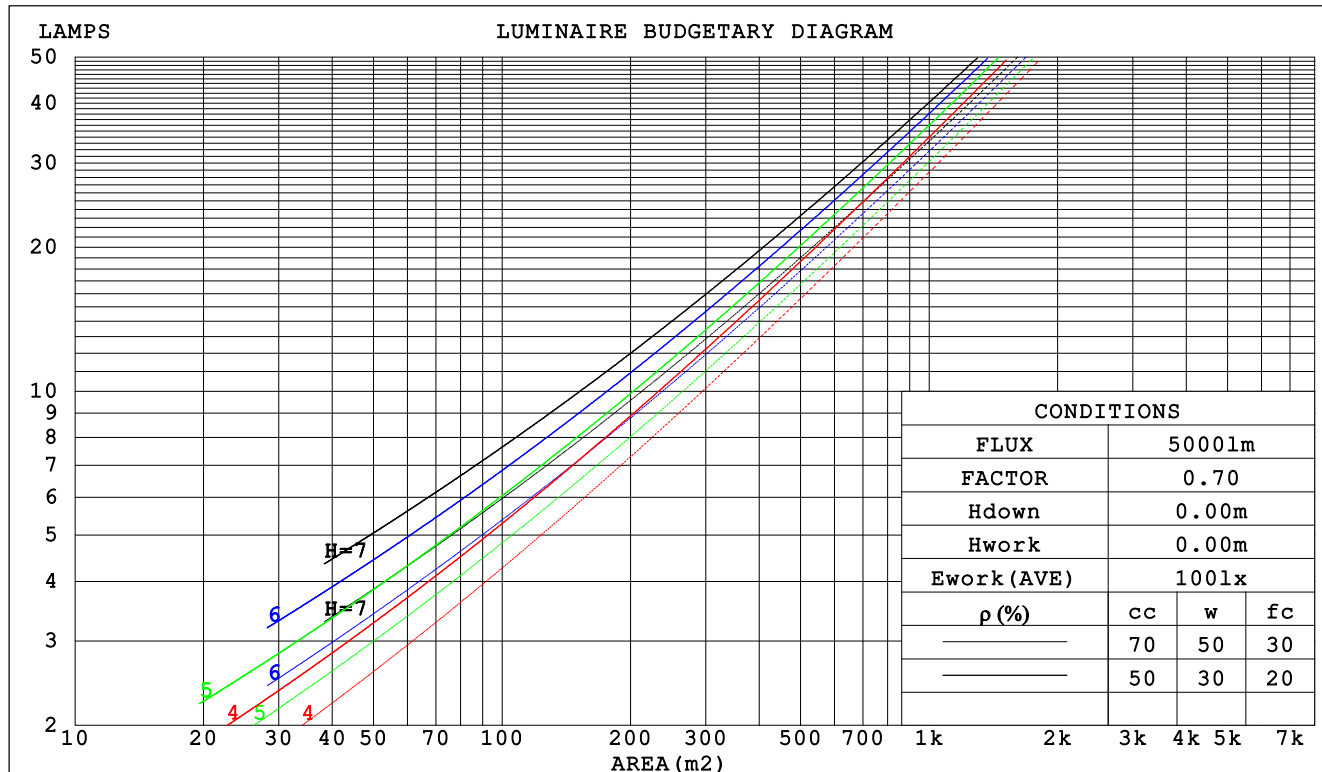
C Range: 0 - 360DEG
C Interval: 15.0DEG
Test Speed: HIGH
Temperature: 24DEG
Operators: Go
Test Date: 30 October 2019

γ Range: 0 - 180DEG
γ Interval: 1.0DEG
Test System: EVERFINE GO-2000A_V1 SYSTEM V2.0.295
Humidity: 43%
Test Distance: 7.710m [K=1.0000]
Remarks:

CU AND LUMINAIRE BUDGETARY ESTIMATE DIAGRAM

NAME: TYP 591 32 01n	TYPE:	WEIGHT:
SPEC.:	DIM.: 420x230x165mm	SERIAL No.:
MFR.: Elektrosvit Svatoborice, a.s.	SUR.:	Shielding Angle:

pcc	80%			70%			50%			30%			10%			0
p _w	50%	30%	10%	50%	30%	10%	50%	30%	10%	50%	30%	10%	50%	30%	10%	0
p _{fc}	20%			20%			20%			20%			20%			0
RCR	RCR:Room Cavity Ratio															



C Range: 0 - 360DEG

C Interval: 15.0DEG

Test Speed: HIGH

Temperature:24DEG

Operators:Go

Test Date:30 October 2019

γ Range: 0 - 180DEG

γ Interval: 1.0DEG

Test System:EVERFINE GO-2000A_V1 SYSTEM V2.0.295

Humidity:43%

Test Distance:7.710m [K=1.0000]

Remarks:

WEC AND CCEC

NAME: TYP 591 32 01n	TYPE:	WEIGHT:
SPEC.:	DIM.: 420x230x165mm	SERIAL No.:
MFR.: Elektrosvit Svatoborice, a.s.	SUR.:	Shielding Angle:

pcc	80%	70%	50%	30%	10%	0
pw	50% 30% 10%	50% 30% 10%	50% 30% 10%	50% 30% 10%	50% 30% 10%	0
pfc	20%	20%	20%	20%	20%	0
RCR	RCR:Room Cavity Ratio Wall Exitance Coefficients(WEC)					
0.0						
1.0	.339 .193 .061	.330 .188 .060	.313 .180 .057	.298 .172 .055	.284 .165 .053	
2.0	.306 .168 .051	.298 .164 .051	.283 .158 .049	.270 .151 .047	.257 .145 .046	
3.0	.278 .148 .044	.271 .145 .044	.258 .140 .042	.245 .134 .041	.234 .130 .040	
4.0	.253 .132 .039	.247 .129 .038	.235 .125 .037	.224 .121 .036	.214 .116 .035	
5.0	.233 .119 .034	.227 .117 .034	.217 .113 .033	.207 .109 .032	.197 .106 .032	
6.0	.215 .108 .031	.210 .106 .030	.200 .103 .030	.191 .099 .029	.183 .096 .029	
7.0	.199 .098 .028	.195 .097 .028	.186 .094 .027	.178 .091 .027	.170 .089 .026	
8.0	.186 .091 .025	.182 .089 .025	.174 .087 .025	.166 .084 .024	.160 .082 .024	
9.0	.174 .084 .023	.170 .083 .023	.163 .081 .023	.156 .078 .022	.150 .076 .022	
10.0	.163 .078 .022	.160 .077 .022	.153 .075 .021	.147 .073 .021	.141 .071 .020	

pcc	80%	70%	50%	30%	10%	0
pw	50% 30% 10%	50% 30% 10%	50% 30% 10%	50% 30% 10%	50% 30% 10%	0
pfc	20%	20%	20%	20%	20%	0
RCR	RCR:Room Cavity Ratio Ceiling Cavity Exitance Coefficients(CCEC)					
0.0	.233 .233 .233	.199 .199 .199	.136 .136 .136	.078 .078 .078	.025 .025 .025	
1.0	.225 .199 .175	.193 .171 .151	.132 .117 .104	.076 .068 .061	.024 .022 .020	
2.0	.217 .175 .140	.186 .151 .121	.128 .104 .084	.074 .061 .049	.024 .020 .016	
3.0	.209 .158 .117	.180 .136 .101	.123 .095 .071	.071 .055 .042	.023 .018 .014	
4.0	.202 .145 .101	.173 .125 .088	.119 .087 .062	.069 .051 .037	.022 .017 .012	
5.0	.194 .135 .091	.167 .116 .079	.115 .081 .056	.066 .048 .033	.021 .016 .011	
6.0	.187 .126 .083	.160 .109 .072	.111 .077 .051	.064 .045 .030	.021 .015 .010	
7.0	.180 .119 .077	.155 .104 .067	.107 .073 .048	.062 .043 .028	.020 .014 .009	
8.0	.173 .114 .073	.149 .099 .064	.103 .069 .045	.060 .041 .027	.019 .013 .009	
9.0	.167 .109 .070	.144 .094 .061	.100 .066 .043	.058 .039 .026	.019 .013 .009	
10.0	.161 .105 .067	.139 .091 .058	.096 .064 .041	.056 .038 .025	.018 .012 .008	

C Range: 0 - 360DEG
C Interval: 15.0DEG
Test Speed: HIGH
Temperature:24DEG
Operators:Go
Test Date:30 October 2019

γ Range: 0 - 180DEG
γ Interval: 1.0DEG
Test System:EVERFINE GO-2000A_V1 SYSTEM V2.0.295
Humidity:43%
Test Distance:7.710m [K=1.0000]
Remarks:

UGR(Unified Glare Rating) Table

NAME: TYP 591 32 01n					TYPE:					WEIGHT:				
SPEC.:					DIM.: 420x230x165mm					SERIAL No.:				
MFR.: Elektrosvit Svatoborice, a.s.					SUR.:					Shielding Angle:				
ceiling/cavity	0.7	0.7	0.5	0.5	0.3	0.7	0.7	0.5	0.5	0.3				
walls	0.5	0.3	0.5	0.3	0.3	0.5	0.3	0.5	0.3	0.3				
working plane	0.2	0.2	0.2	0.2	0.2	0.2	0.2	0.2	0.2	0.2				
Room dimensions					Viewed crosswise					Viewed endwise				
x = 2H y = 2H	2H	23.2	24.7	23.6	25.0	25.3	22.6	24.0	22.9	24.3	24.6			
	3H	25.0	26.4	25.4	26.7	27.1	24.3	25.7	24.7	26.0	26.4			
	4H	25.9	27.2	26.3	27.5	27.9	25.2	26.5	25.6	26.8	27.2			
	6H	26.6	27.8	27.0	28.2	28.6	26.0	27.2	26.4	27.5	27.9			
	8H	27.0	28.2	27.4	28.6	29.0	26.3	27.5	26.8	27.9	28.3			
	12H	27.5	28.6	27.9	29.0	29.4	26.7	27.8	27.2	28.2	28.7			
	4H	2H	23.7	25.0	24.1	25.4	25.8	23.2	24.5	23.6	24.8	25.2		
		3H	25.8	26.9	26.2	27.3	27.7	25.1	26.3	25.6	26.7	27.1		
		4H	26.7	27.8	27.2	28.2	28.7	26.1	27.1	26.6	27.6	28.0		
		6H	27.7	28.6	28.2	29.1	29.6	27.0	28.0	27.5	28.4	28.9		
		8H	28.2	29.1	28.7	29.5	30.0	27.5	28.4	28.0	28.8	29.3		
		12H	28.7	29.5	29.3	30.0	30.6	28.0	28.8	28.5	29.3	29.8		
8H	4H	27.0	27.9	27.5	28.4	28.9	26.5	27.3	27.0	27.8	28.3			
	6H	28.2	28.9	28.7	29.4	30.0	27.6	28.4	28.2	28.9	29.4			
	8H	28.9	29.5	29.4	30.0	30.6	28.2	28.9	28.8	29.4	30.0			
	12H	29.6	30.2	30.2	30.7	31.3	28.9	29.5	29.5	30.0	30.6			
	4H	27.1	27.9	27.6	28.3	28.9	26.5	27.3	27.0	27.8	28.3			
	6H	28.3	29.0	28.9	29.5	30.1	27.8	28.4	28.3	28.9	29.5			
	8H	29.0	29.6	29.6	30.2	30.8	28.5	29.0	29.0	29.6	30.2			
Variations with the observer position at spacings:														
S = 1.0H		+ 0.1 / - 0.1					+ 0.1 / - 0.1							
1.5H		+ 0.2 / - 0.3					+ 0.2 / - 0.2							
2.0H		+ 0.2 / - 0.4					+ 0.2 / - 0.3							

CIE Pub.117 Corrected 3208 lm Total Lamp Luminous Flux. (8log(F/F0) = 4.1)

C Range: 0 - 360DEG
C Interval: 15.0DEG
Test Speed: HIGH
Temperature: 24DEG
Operators: Go
Test Date: 30 October 2019

γ Range: 0 - 180DEG
γ Interval: 1.0DEG
Test System: EVERFINE GO-2000A_V1 SYSTEM V2.0.295
Humidity: 43%
Test Distance: 7.710m [K=1.0000]
Remarks:

UTILIZATION FACTORS TABLE

NAME: TYP 591 32 01n	TYPE:	WEIGHT:
SPEC.:	DIM.: 420x230x165mm	SERIAL No.:
MFR.: Elektrosvit Svatoborice, a.s.	SUR.:	Shielding Angle:

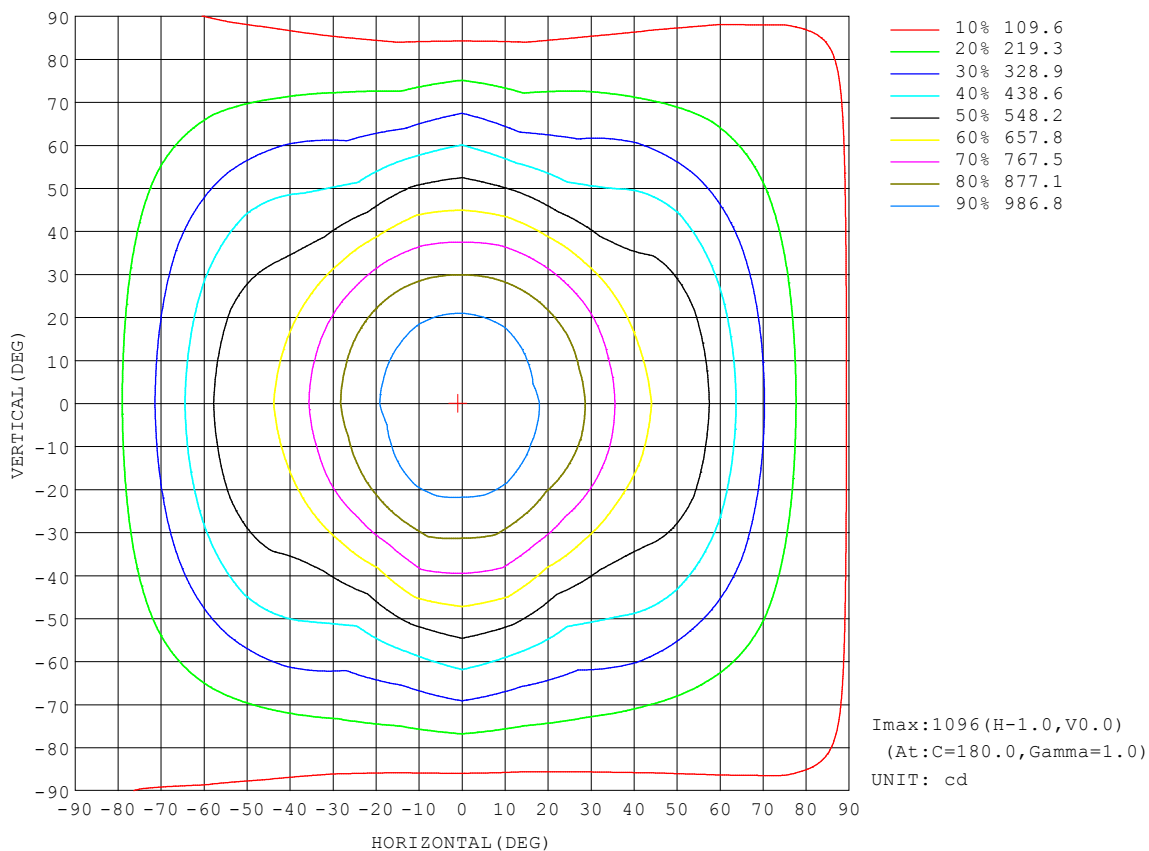
REFLECTANCE										
Ceiling	0.8	0.8	0.8	0.7	0.7	0.7	0.5	0.5	0.5	0
Walls	0.7	0.5	0.3	0.7	0.5	0.3	0.7	0.5	0.3	0
Working plane	0.2	0.2	0.2	0.2	0.2	0.2	0.2	0.2	0.2	0
ROOM INDEX	UTILIZATION FACTORS (PERCENT) $k(RI) \times RCR = 5$									
$k = 0.60$	55	44	37	54	43	36	53	43	36	30
0.80	65	53	45	64	52	45	62	51	45	38
1.00	73	61	54	71	61	53	69	62	53	45
1.25	80	69	61	78	68	60	75	66	59	52
1.50	85	74	66	83	73	66	79	71	65	56
2.00	91	82	75	89	81	74	85	78	72	63
2.50	95	87	80	93	85	79	89	82	77	67
3.00	99	91	85	96	89	84	91	86	81	71
4.00	103	97	91	100	94	89	95	90	86	76
5.00	106	100	95	103	98	93	97	93	90	79
ROOM INDEX	UF (total)									Direct
According to DIN EN 13032-2 2004			Suspended					SHRNOM = 1.25		

C Range: 0 - 360DEG
C Interval: 15.0DEG
Test Speed: HIGH
Temperature: 24DEG
Operators: Go
Test Date: 30 October 2019

γ Range: 0 - 180DEG
 γ Interval: 1.0DEG
Test System: EVERFINE GO-2000A_V1 SYSTEM V2.0.295
Humidity: 43%
Test Distance: 7.710m [K=1.0000]
Remarks:

ISOCANDELA DIAGRAM

NAME: TYP 591 32 01n	TYPE:	WEIGHT:
SPEC.:	DIM.: 420x230x165mm	SERIAL No.:
MFR.: Elektrosvit Svatoborice, a.s.	SUR.:	Shielding Angle:

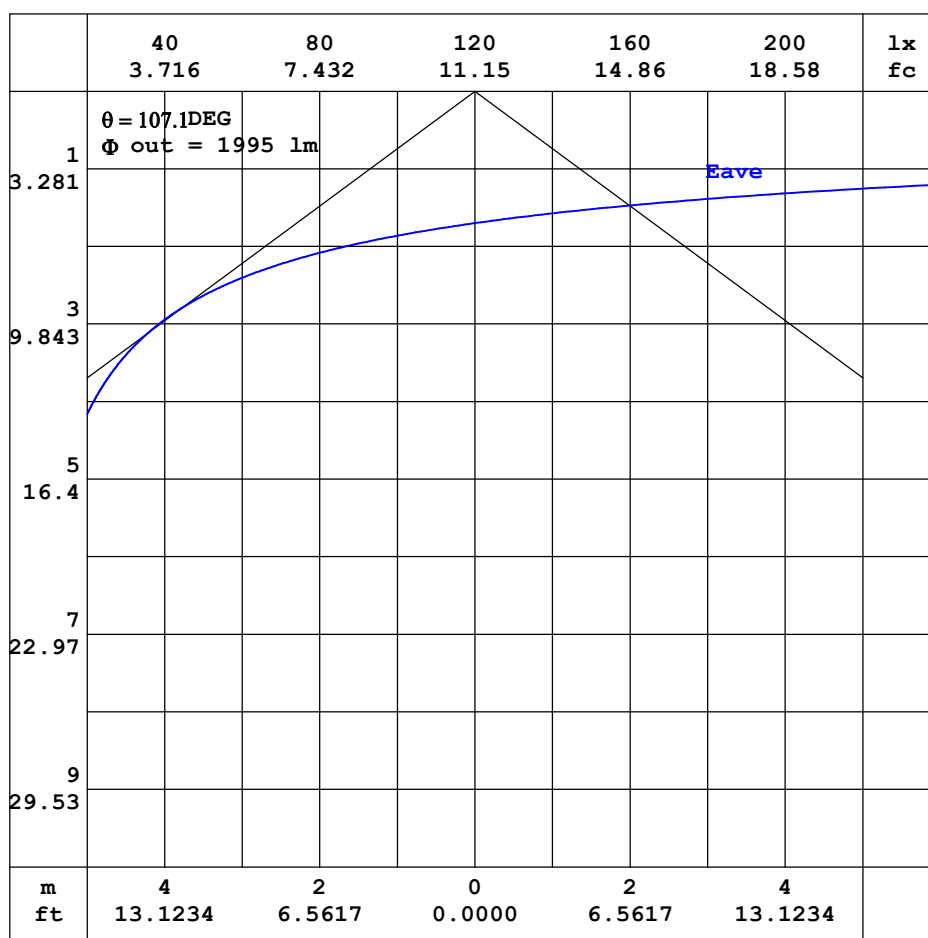


C Range: 0 - 360DEG
C Interval: 15.0DEG
Test Speed: HIGH
Temperature:24DEG
Operators:Go
Test Date:30 October 2019

γ Range: 0 - 180DEG
 γ Interval: 1.0DEG
Test System:EVERFINE GO-2000A_V1 SYSTEM V2.0.295
Humidity:43%
Test Distance:7.710m [K=1.0000]
Remarks:

AAI CURVES

NAME: TYP 591 32 01n	TYPE:	WEIGHT:
SPEC.:	DIM.: 420x230x165mm	SERIAL No.:
MFR.: Elektrosvit Svatoborice, a.s.	SUR.:	Shielding Angle:



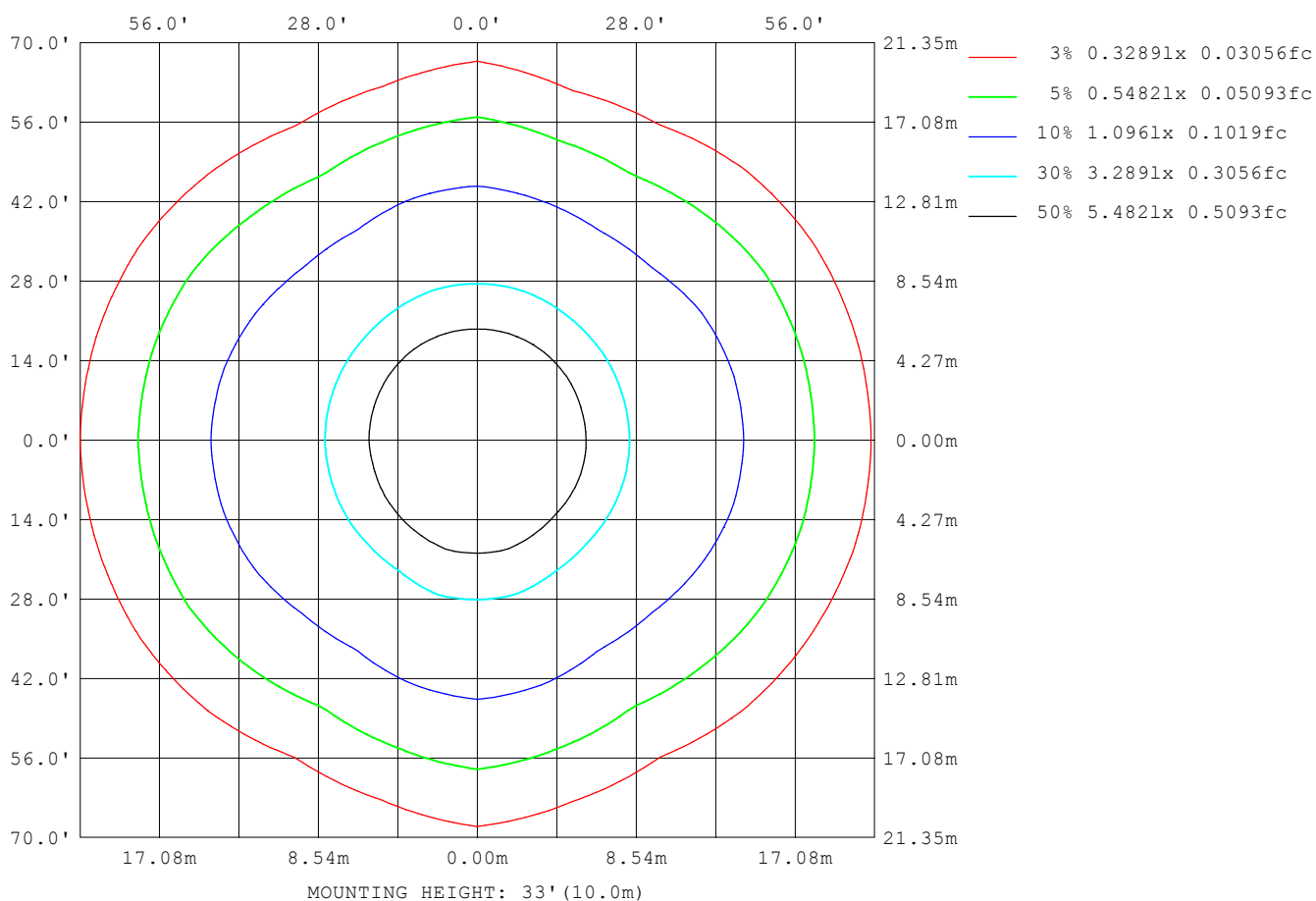
Note: The Curves indicate the illuminated area and the average illuminance when the luminaire is at different distance.

C Range: 0 - 360DEG
 C Interval: 15.0DEG
 Test Speed: HIGH
 Temperature: 24DEG
 Operators: Go
 Test Date: 30 October 2019

γ Range: 0 - 180DEG
 γ Interval: 1.0DEG
 Test System: EVERFINE GO-2000A_V1 SYSTEM V2.0.295
 Humidity: 43%
 Test Distance: 7.710m [K=1.0000]
 Remarks:

ISOLUX DIAGRAM

NAME: TYP 591 32 01n	TYPE:	WEIGHT:
SPEC.:	DIM.: 420x230x165mm	SERIAL No.:
MFR.: Elektrosvit Svatoborice, a.s.	SUR.:	Shielding Angle:



C Range: 0 - 360DEG
C Interval: 15.0DEG
Test Speed: HIGH
Temperature: 24DEG
Operators: Go
Test Date: 30 October 2019

γ Range: 0 - 180DEG
 γ Interval: 1.0DEG
Test System: EVERFINE GO-2000A_V1 SYSTEM V2.0.295
Humidity: 43%
Test Distance: 7.710m [K=1.0000]
Remarks:

LED Avg.L Report

NAME: TYP 591 32 01n	TYPE:	WEIGHT:
SPEC.:	DIM.: 420x230x165mm	SERIAL No.:
MFR.: Elektrosvit Svatoborice, a.s.	SUR.:	Shielding Angle:

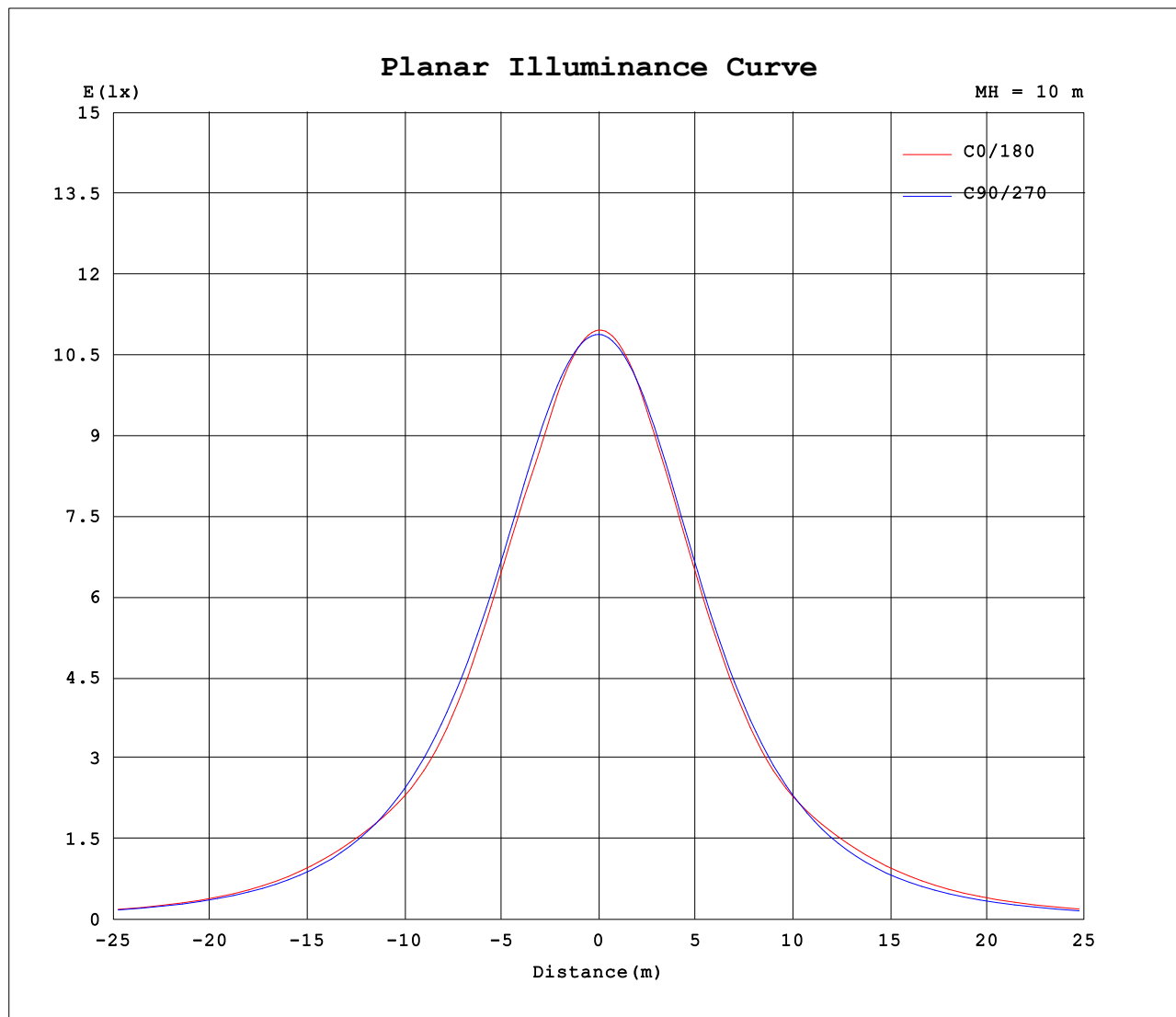
AvgL	cd/m2
L_0~180 (65) av	22323
L_0~180 (75) av	22934
L_0~180 (85) av	37762
L_90~270 (65) av	19968
L_90~270 (75) av	20048
L_90~270 (85) av	28378
L_45 (65) av	19659
L_45 (75) av	20125
L_45 (85) av	33250

Standard: GB/T 29293-2012

C Range: 0 - 360DEG
C Interval: 15.0DEG
Test Speed: HIGH
Temperature:24DEG
Operators:Go
Test Date:30 October 2019

γ Range: 0 - 180DEG
γ Interval: 1.0DEG
Test System:EVERFINE GO-2000A_V1 SYSTEM V2.0.295
Humidity:43%
Test Distance:7.710m [K=1.0000]
Remarks:

Planar Illuminance Curve



C Range: 0 - 360DEG
 C Interval: 15.0DEG
 Test Speed: HIGH
 Temperature: 24DEG
 Operators: Go
 Test Date: 30 October 2019

γ Range: 0 - 180DEG
 γ Interval: 1.0DEG
 Test System: EVERFINE GO-2000A_V1 SYSTEM V2.0.295
 Humidity: 43%
 Test Distance: 7.710m [K=1.0000]
 Remarks:

LUMINOUS DISTRIBUTION INTENSITY DATA

NAME: TYP 591 32 01n	TYPE:	WEIGHT:
SPEC.:	DIM.: 420x230x165mm	SERIAL No.:
MFR.: Elektrosvit Svatoborice, a.s.	SUR.:	Shielding Angle:

Table--1

UNIT: cd

C (DEG) γ (DEG)	0	15	30	45	60	75	90	105	120	135	150	165	180	195	210	225	240	255	270
0	1096	1095	1093	1092	1090	1090	1088	1087	1086	1085	1085	1084	1096	1095	1093	1092	1090	1090	1088
5	1085	1085	1084	1084	1084	1084	1084	1084	1082	1081	1080	1078	1091	1089	1088	1087	1085	1084	1082
10	1059	1060	1062	1065	1068	1069	1070	1069	1068	1066	1061	1058	1069	1067	1067	1067	1068	1068	1067
15	1014	1016	1022	1033	1040	1043	1043	1044	1044	1037	1025	1016	1026	1025	1029	1034	1039	1039	1039
20	971	971	972	983	998	1004	1004	1008	1005	991	977	968	978	978	981	987	995	997	996
25	925	925	921	919	941	955	954	959	950	933	918	910	920	921	929	933	940	942	941
30	857	858	854	848	870	896	894	901	879	858	848	842	852	852	860	868	875	877	875
35	776	778	773	768	791	829	830	836	793	773	772	769	777	776	781	787	800	806	804
40	699	697	688	684	701	755	761	761	701	687	692	692	700	698	697	697	711	731	729
45	651	641	614	602	609	673	690	678	608	605	617	637	649	637	620	607	615	654	656
50	628	610	565	529	524	589	617	590	522	533	572	609	623	604	566	528	523	570	583
55	585	571	528	474	449	504	543	500	448	482	539	571	585	568	527	470	443	486	512
60	505	498	470	427	387	422	467	418	386	437	484	503	513	502	475	422	377	402	439
65	416	411	390	369	332	350	391	347	333	379	408	420	429	421	402	367	322	323	365
70	334	330	310	298	278	286	317	283	280	310	328	340	350	344	326	300	268	255	290
75	257	254	239	228	221	224	244	225	224	240	254	266	275	271	258	234	214	198	221
80	191	188	178	169	166	167	178	169	170	179	192	200	207	205	196	178	161	147	157
85	142	141	133	124	119	116	121	118	123	133	144	150	153	153	146	132	117	102	100
90	107	103	98.4	92.3	83.8	76.0	71.7	77.2	86.5	98.1	105	109	115	115	109	98.2	85.3	68.3	63.8
95	94.8	87.7	79.6	72.2	64.5	54.5	50.4	56.0	66.6	76.7	84.5	91.9	99.4	94.5	87.7	76.9	63.2	47.6	42.3
100	79.1	75.1	68.5	60.4	50.9	42.8	38.7	43.0	52.4	63.6	71.4	76.9	81.8	80.2	74.0	62.9	49.2	37.2	32.6
105	67.6	63.9	58.0	49.3	40.3	35.9	32.7	35.5	40.9	52.5	60.4	65.6	70.4	68.1	62.1	49.8	36.6	29.3	26.3
110	57.8	53.5	38.4	27.0	30.0	28.0	26.4	28.2	29.0	26.2	40.2	55.2	59.1	56.1	39.6	20.9	24.5	22.7	21.5
115	27.0	19.8	8.65	15.5	22.0	24.0	23.5	22.8	20.2	13.7	9.41	19.8	26.8	19.1	8.66	10.1	16.6	18.5	18.7
120	8.03	6.19	6.05	7.22	16.1	20.1	20.3	19.7	14.9	6.36	5.82	6.12	7.89	5.88	5.61	5.68	10.3	14.3	15.1
125	6.77	6.65	6.41	6.54	8.28	14.9	16.5	14.0	7.57	6.14	6.01	6.42	6.63	6.27	5.89	5.90	6.37	8.42	9.27
130	7.08	6.98	6.77	7.00	7.59	8.31	8.94	8.29	7.25	6.53	6.37	6.60	6.88	6.57	6.30	6.40	6.87	7.24	7.10
135	7.38	7.43	7.46	7.52	8.22	8.52	8.29	8.34	7.61	7.00	6.96	7.05	7.18	7.02	6.92	6.97	7.31	7.43	7.36
140	8.03	8.10	8.12	8.11	8.27	8.38	8.32	8.07	7.71	7.59	7.58	7.67	7.83	7.66	7.54	7.58	7.65	7.74	7.75
145	8.62	8.70	8.73	8.73	8.68	8.61	8.56	8.41	8.28	8.14	8.14	8.25	8.45	8.28	8.15	8.16	8.22	8.30	8.35
150	9.18	9.27	9.31	9.32	9.29	9.23	9.12	8.99	8.83	8.68	8.68	8.79	9.02	8.84	8.71	8.70	8.77	8.87	8.94
155	9.71	9.85	9.93	9.95	9.90	9.80	9.68	9.55	9.37	9.22	9.21	9.32	9.58	9.40	9.27	9.27	9.34	9.42	9.51
160	10.2	10.3	10.4	10.4	10.3	10.2	10.1	9.97	9.83	9.71	9.72	9.80	10.1	9.91	9.81	9.82	9.84	9.89	9.94
165	10.7	10.8	10.8	10.7	10.6	10.5	10.4	10.3	10.2	10.2	10.2	10.3	10.6	10.5	10.3	10.3	10.3	10.2	10.3
170	11.0	11.0	11.0	10.9	10.8	10.7	10.7	10.6	10.5	10.5	10.6	10.7	11.0	10.9	10.7	10.7	10.6	10.6	10.6
175	11.1	11.1	11.1	11.0	11.0	10.9	10.9	10.8	10.7	10.7	10.8	10.9	11.1	11.0	10.9	10.8	10.8	10.8	10.8
180	11.2	11.2	11.1	11.1	11.0	10.9	10.9	10.9	10.8	10.9	11.0	11.0	11.2	11.2	11.2	11.1	11.0	10.9	10.9

C Range: 0 - 360DEG

C Interval: 15.0DEG

Test Speed: HIGH

Temperature:24DEG

Operators:Go

Test Date:30 October 2019

γ Range: 0 - 180DEG

γ Interval: 1.0DEG

Test System:EVERFINE GO-2000A_V1 SYSTEM V2.0.295

Humidity:43%

Test Distance:7.710m [K=1.0000]

Remarks:

LUMINOUS DISTRIBUTION INTENSITY DATA

NAME: TYP 591 32 01n	TYPE:	WEIGHT:
SPEC.:	DIM.: 420x230x165mm	SERIAL No.:
MFR.: Elektrosvit Svatoborice, a.s.	SUR.:	Shielding Angle:

Table--2

UNIT: cd

C (DEG) γ (DEG)	285	300	315	330	345														
0	1087	1086	1085	1085	1084														
5	1081	1078	1076	1075	1074														
10	1063	1060	1055	1052	1049														
15	1035	1030	1022	1014	1006														
20	993	988	977	967	963														
25	938	934	925	923	919														
30	875	871	865	861	852														
35	806	798	788	783	774														
40	729	711	699	698	694														
45	646	617	610	621	637														
50	559	526	528	573	609														
55	469	445	473	539	572														
60	387	378	431	482	499														
65	312	326	374	401	412														
70	249	274	301	320	331														
75	196	216	231	249	256														
80	147	161	174	187	191														
85	102	117	129	139	142														
90	69.3	85.1	96.3	104	107														
95	49.6	64.8	77.4	86.2	91.3														
100	38.5	51.3	63.9	73.7	78.3														
105	29.7	37.6	53.4	62.6	66.5														
110	23.0	22.8	22.7	46.7	57.0														
115	17.6	14.8	7.52	11.2	23.7														
120	12.9	8.03	5.77	5.92	6.21														
125	7.66	6.26	6.07	6.28	6.55														
130	7.21	6.83	6.59	6.51	6.80														
135	7.37	7.31	7.26	7.18	7.12														
140	7.84	7.90	7.90	7.83	7.76														
145	8.43	8.47	8.48	8.41	8.35														
150	9.02	9.05	9.03	8.97	8.89														
155	9.58	9.63	9.62	9.56	9.46														
160	9.99	10.1	10.1	10.1	9.96														
165	10.3	10.4	10.5	10.5	10.4														
170	10.5	10.6	10.7	10.8	10.7														
175	10.7	10.7	10.8	10.8	10.8														
180	10.9	10.8	10.9	11.0	11.0														

C Range: 0 - 360DEG

C Interval: 15.0DEG

Test Speed: HIGH

Temperature:24DEG

Operators:Go

Test Date:30 October 2019

γ Range: 0 - 180DEG

γ Interval: 1.0DEG

Test System:EVERFINE GO-2000A_V1 SYSTEM V2.0.295

Humidity:43%

Test Distance:7.710m [K=1.0000]

Remarks: